

विषय सूचि CONTENTS

	Page No.
1 Installed Capacity	1
2 Additions to Capacity	1
3 Power Supply Position	
3.1 Requirement Vs Availability	2
3.1.1 Ex-Bus Demand (MW)	2
3.1.2 Demand (MW)	2
3.2.1 Energy Ex- Bus	3
3.2.2 Gross Energy Consumption (MU)	3
3.3 Load Shedding in MU	4
3.4 Central Generating Stations-Generation & Relief to the Grid	4
3.5 Schedule (As per LGBR), Actuals and Ex-Bus consumption of energy in MU.	5
4 Restrictions and Controls on power supply	6
5 Energy Exchanges in MU	7
6 Total Entitlements/Schedule/Actual Drawal including Bilateral exchanges in MU	8
7 Meetings held by SRPC during the month	8
8 Station-wise Generation	9
9 Storage position in Major Hydel Reservoirs	15
10 Performance of Important Thermal/Nuclear Plants	15
11 Regional Grid Operation	16
11.1 Frequency Profile	16
11.2 Voltage Profile at selected 400 KV Sub-Stations in KV	16
11.3 Operation of Tie Lines	17
11.4 Installation of Shunt Capacitors	18
11.5 Grid Separations	18
11.6 Grid Disturbances	18
12 Review of Progress of works on new Generation Schemes in SR	19
13 Review of Progress of works on new 400 KV & 220/230 KV Transmission Lines under state sector in SR	23
14 Review of Progress of works on new 400 KV & 220/230 KV Substations under state sector in SR	31
15 Review of Progress of works on Powergrid executed central transmission schemes	34

ANNEXURE

ANX-I A	Daily Maximum & Minimum Demand in MW for Andhra Pradesh
ANX-I B	Daily Maximum & Minimum Demand in MW for Karnataka
ANX-I C	Daily Maximum & Minimum Demand in MW for Kerala
ANX-I D	Daily Maximum & Minimum Demand in MW for Tamil Nadu
ANX-II A	Load Curve of Southern Region on Maximum Demand Day
ANX-II B	Load Curve of Southern Region on Minimum Demand Day
ANX-II C	Hourly values in MW for Southern Region on Maximum Demand Day And Minimum Demand Day
ANX-II D	Load Duration Curve of SR
ANX- III	Intra regional energy exchanges, Wheeled energy through SR & Actual Energy exchanges
ANX- IV	Scheduled bilateral exchanges
ANX- V	Availability of PGCIL Transmission Systems
ANX- VI	Line flows in MU & Power flow in MW (Furnished by PGCIL)
ANX- VII	Allocation in I.S.G.S.to S.R. Beneficiaries

1. 31 जुलाई 2007 को स्थापित क्षमता मे वा में

SOUTHERN REGION INSTALLED CAPACITY IN MW AS ON 31ST JULY 2007

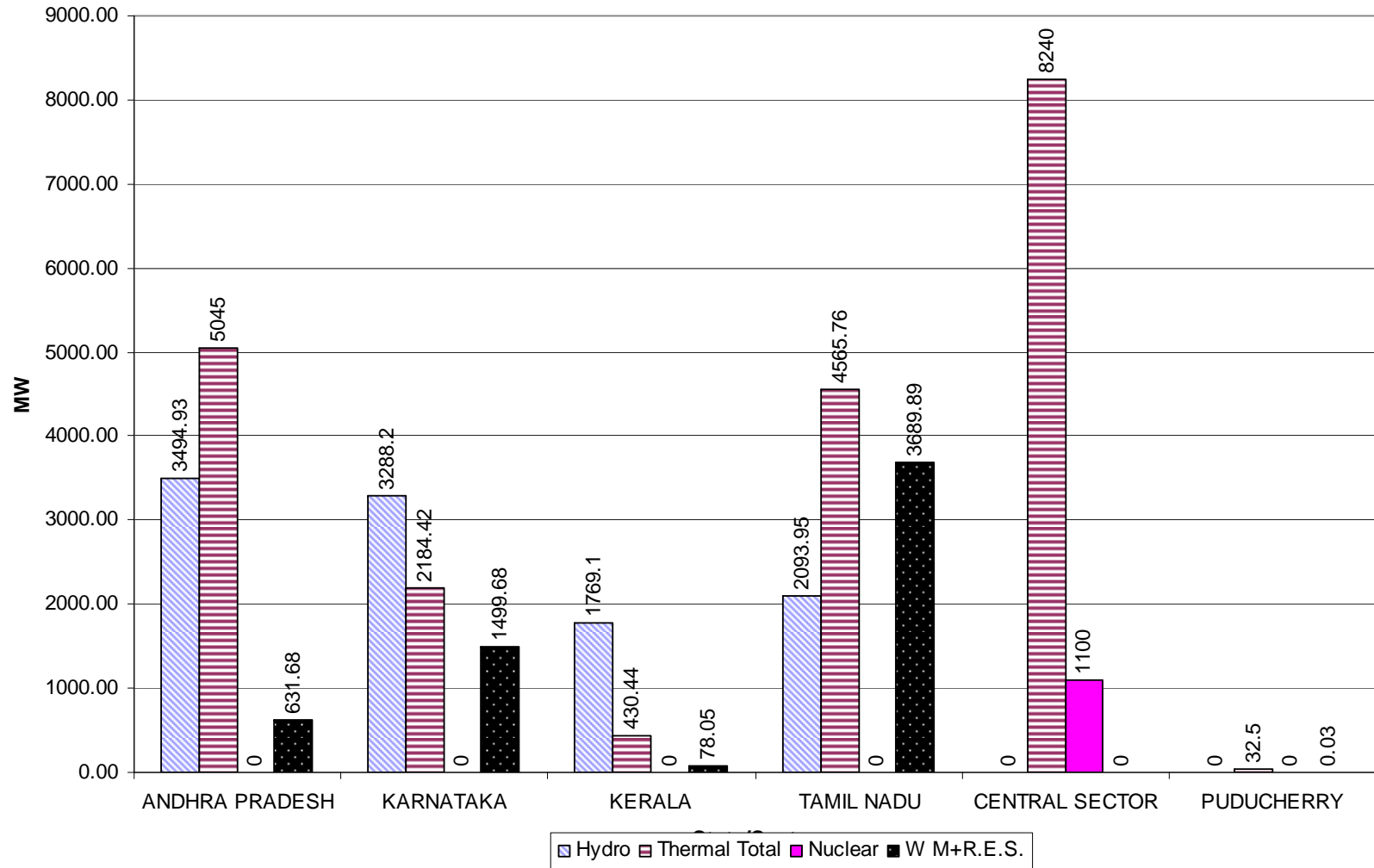
STATE	Hydro	THERMAL				Nuclear	W M+R.E.S.	TOTAL
		COAL	GAS	DIESEL	Thermal Total			
ANDHRA PRADESH	3494.93	3132.50	1875.70	36.80	5045.00	0.00	631.68	9171.61
KARNATAKA	3288.20	1730.00	220.00	234.42	2184.42	0.00	1499.68	6972.30
KERALA	1769.10	0.00	174.00	256.44	430.44	0.00	78.05	2277.59
TAMIL NADU	2093.95	3220.00	934.10	411.66	4565.76	0.00	3689.89	10349.60
PUDUCHERRY	0.00	0.00	32.50	0.00	32.50	0.00	0.03	32.53
CENTRAL SECTOR	0.00	7890.00	350.00	0.00	8240.00	1100.00	0.00	9340.00
SOUTHERN REGION	10646.18	15972.50	3586.30	939.32	20498.12	1100.00	5899.33	38143.63

The Graphical representation is in page IA

2. जुलाई 2007 में जोड़ी गई क्षमता ADDITIONS TO CAPACITY IN MW IN JULY 2007

State	Type	Sector	Station	Capacity (MW)	Date of Synchronising
KARNATAKA	Hydro	Private	Pioneer Power	24.5	July-07
KARNATAKA	Hydro	Private	Cauveri	4.5	July-07
KARNATAKA	Wind	Private	Bharat Petroleum	5	July-07

SR-Installed Capacity- July 2007



3. बिजली की आपूर्ति की स्थिति **POWER SUPPLY POSITION**

3.1 अपेक्षा एवं उपलब्धता **Requirement Vs Availability**

3.1.1 मांग (एक्स-बस) **Ex-Bus Demand**

(As given by SRLDC)

		A.P.	Karnataka	Kerala	T.N.	Puducherry	S. Region
a)	Ex-Bus Peak Demand (Maximum Unrestricted Requirement)	8634	4840	2570	8747	-	23740
b)	Ex -Bus Peak Met(Actuals)	7866	4715	2545	8577	273	23208
c)	Average of daily max shortage	-564	-142	-46	-146		-828
d)	Shortage in % (c/a)	-7%	-3%	-2%	-2%		-3%
e)	Maximum of daily max shortage	-831	-604	-78	-250		-1226

Note: Item Nos.a, b , c & e are not for same day/hour.

3.1.2 मांग **Demand**

Maximum & Minimum Demand and Peak Demand Met (in MW)

		A.P.	Karnataka	Kerala	T.N.xx	Puducherry	S. Region
a	Max Unrestricted Requirement (PSP: Gross) #	8862	4974	2583	8990	273	24338
b	Gross Peak Met(Actual)	8094	4849	2558	8820	273	23806
	Date	7866 ## 27-Jul-07	19-Jul-07	13-Jul-07	18-Jul-07	4-Jul-07	18-Jul-07
c	Unrestricted Requirement (LGBR)	8417 ##	5928	2632	8952	288	25076
d	Minimum Demand	4828	1956	1005	5337	-	14703
	Date	1-Jul-07	1-Jul-07	1-Jul-07	30-Jul-07		1-Jul-07
e	Maximum Demand (July 2006)	8401 (20th) 8104 ##	4903 (24th)	2568 (26th)	8339 (7th)	255 (11th)	22361 (20th)

Note: Item Nos. a, b & c are not for same day/hour.

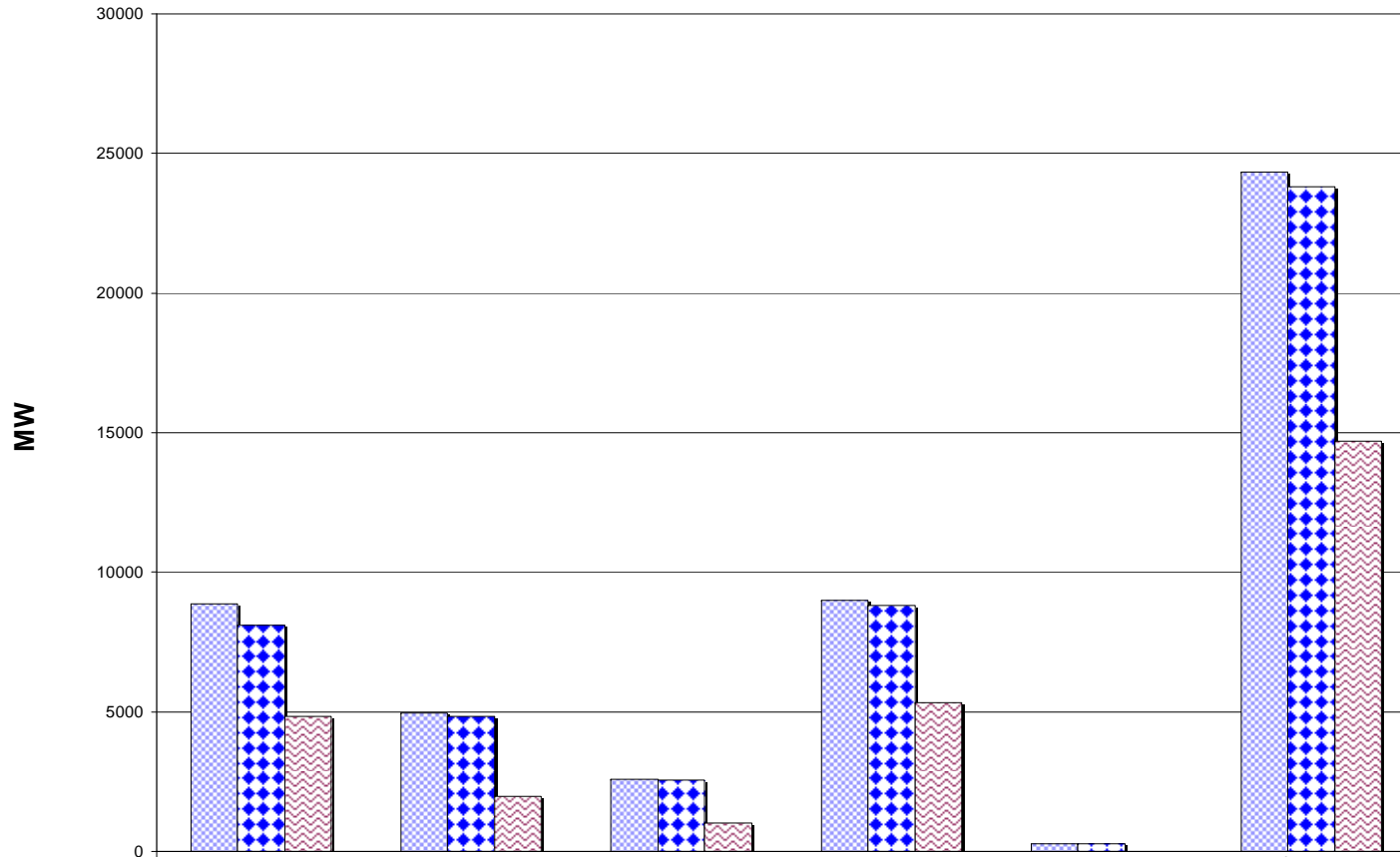
The hourly Southern Regional Grid Demand for the maximum and minimum demand days are shown in Annexures-II A, II B & II C.

Tamil Nadu Maximum Demand (Actuals) includes Wind Mills Generation & 102.15 MW of Cogeneration

Ex-bus figure xx (Excludes Neyveli mining loads)

Frequency Correction , Effect of Load Shedding and Power Cuts taken into account.

Maximum & Minimum demand and Peak demand met- July 2007



Max Unrestricted Requirement (PSP: Gross) #	8862	4974	2583	8990	273	24338
Gross Peak Met(Actual)	8094	4849	2558	8820	273	23806
Minimum Demand	4828	1956	1005	5337	0	14703

3.2.1. ऊर्जा (एक्स-बस)**Energy (Ex-Bus)**
(PSP Figures)

Figures in MU

	A.P.	Karnataka	Kerala	T.N.	Puducherry	S. Region
a) Unrestricted Energy requirement	5171.25	3059.27	1208.12	5619.95	163.08	15221.67
b) Actual Energy Supplied	5067.40	3032.07	1195.62	5579.77	163.08	15037.94
c) Surplus+/Deficit-	-103.85	-27.20	-12.50	-40.18	0.00	-183.73
d) Percentage	-2.01	-0.89	-1.03	-0.71	0.00	-1.21

3.2.2 विद्युत उपभोग**Gross Energy Consumption (in MU)**
(Constituent figures)

	A.P		Karnataka	Kerala	Tamil Nadu xx	Puducherry**	Southern Region
		#					
Unrestricted Requirement #	5340		3085	1200	5749	163	15537
Unrestricted Requirement (LGBR)	-	5010	3308	1197	5834	171	15604
Actual	5236	5067	3057	1187	5709	163	15353
Average/ Day	169	163	99	38	184	5.26	495
Actual -July 2006	5057	4868	2949	1140	5474	161.0	14779
Average/Day July 2006	163	157	95	37	177	5.19	477

AP consumption includes Srisailam Pump Mode consumption of 0 MU

Ex-bus figure xx (Excludes Neyveli mining loads)

Frequency Correction , Effect of Load Shedding and Power Cuts taken into account.

** Pondicherry Energy Consumption Actual (Gross) is REA/ABT figure

3.3 लोड शेडिंग, मि यू में

Load shedding in MU

State	Andhra Pradesh	Karnataka	Kerala	Tamil Nadu
Load Shedding (MU)	57.42	0.42	0.00	0.00

3.4 केंद्रीय उत्पादन केंद्र

Central Generating Stations

Generation & Relief to the Grid

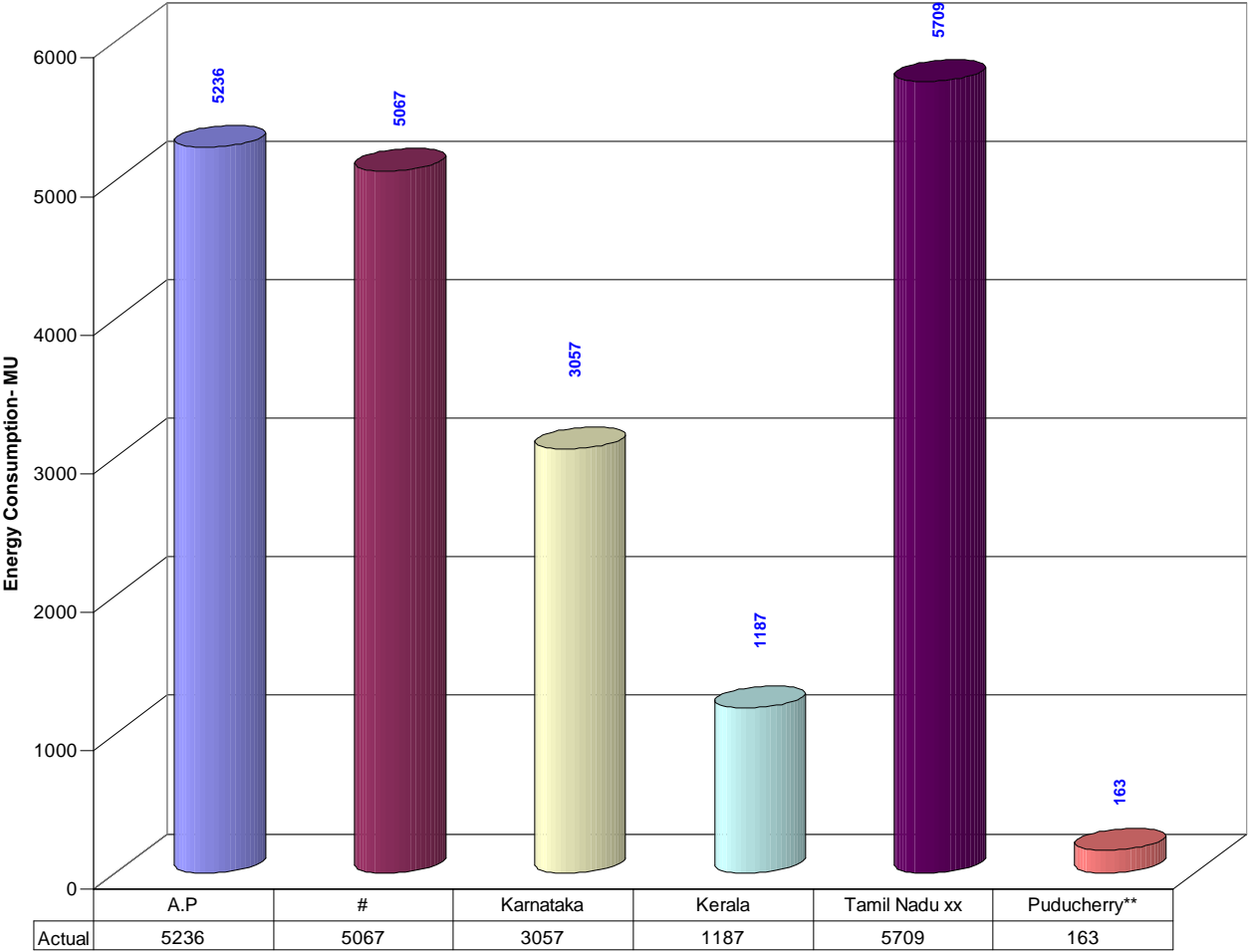
STATION	Gross Generation(MU)	Relief to the Grid(MU)	Local Loads+ Auxiliaries (Actuals) MU
ISGS			
Ramagundam STPS	1559.049	1456.957	102.092
Neyveli TS-II	1008.220	861.000	147.220
Neyveli TS I Expn.	298.845	273.362	25.483 *
Talcher Stage II NTPC	1293.020	1228.650	64.370
MAPS	86.097	62.765	23.332
Kaiga, GS	228.033	201.238	26.795

CGS

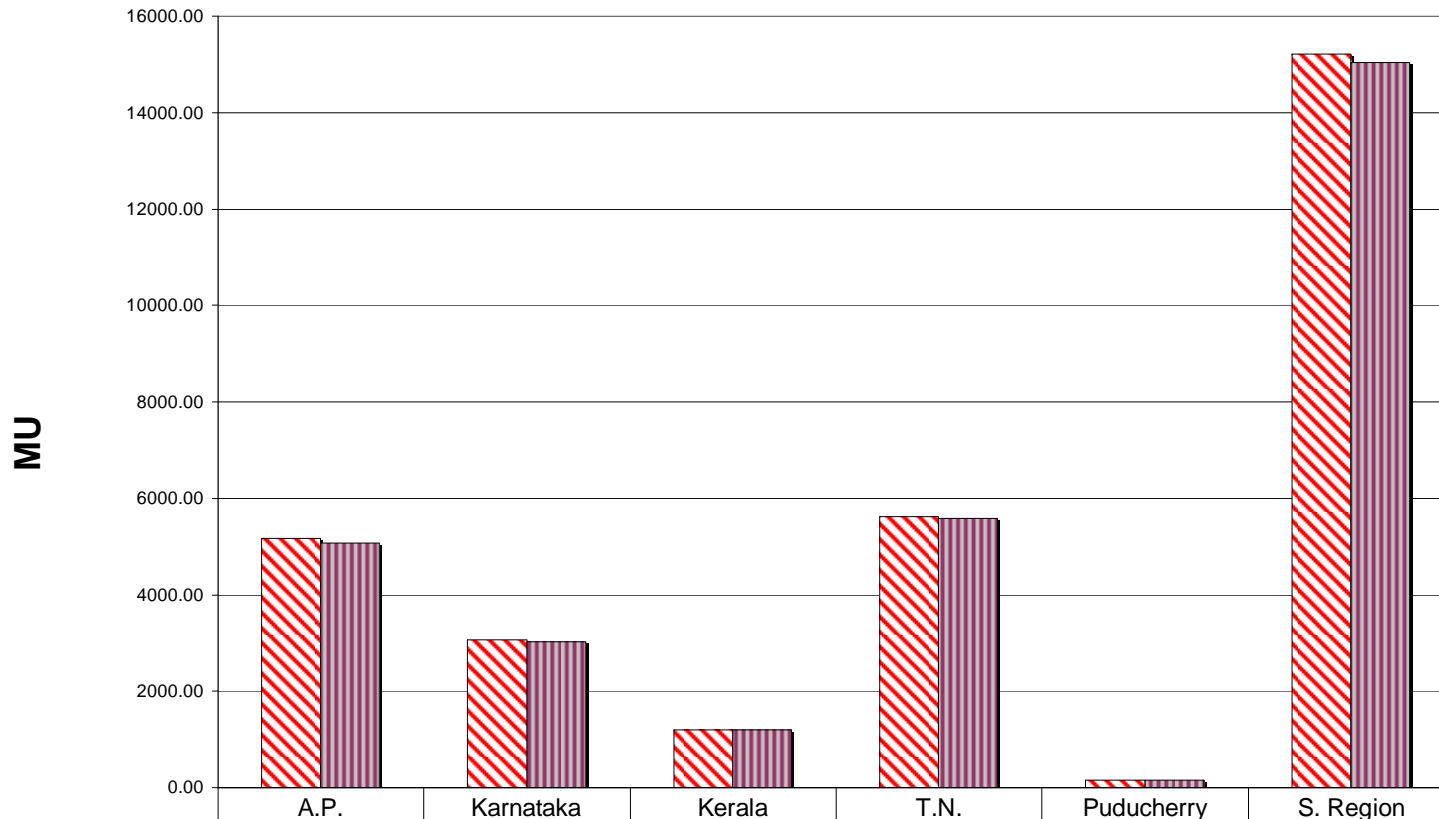
Neyveli TS-I (for TNEB)	291.825	225.987	65.838
Simhadri (for APTRANSCO)	370.660	340.102	30.558
RGCCPP (for KSEB)	107.922	104.684	3.238

* Includes 2.256 MU met from NLC TPS-I.

Gross Energy Consumption (Actual)- July 2007



Energy Requirement Vs Availability- July 2007



a) Unrestricted Energy requirement	5171.25	3059.27	1208.12	5619.95	163.08	15221.67
b) Actual Energy Supplied	5067.40	3032.07	1195.62	5579.77	163.08	15037.94

3.5 शेड्यूल(एलजीबीआर) वास्तविक उत्पादन एवं एक्स बस उपभोग

SCHEDULE (AS PER LGBR), ACTUALS AND EX-BUS CONSUMPTION OF ENERGY IN MU

STATE	SCHEDULE(As per LGBR)				
	AP	KAR	KER	TN & Puducherry	Southern Region
Hydro	591	960	517	423	2491
Thermal(Coal + Gas + Diesel)	2045	1090	12	2174	5321
Wind Mill (State +Private)	7.00	2.50	0.27	1016.00	1025.77
ISGS (Share+ Unallocated)	896	788	596	1339	3619
PURCHASES (IPPs+Captives)	1244	680	0	880	2804
Assistance from Eastern Region	0	0	0	104	104
Total	4783	3521	1125	5936	15364.8

	ACTUALS (Gross)				
	Hydro	1645.69	1158.42	611.17	748.48
Thermal(Coal + Gas + Diesel)	1642.05	693.01	11.59	2113.289	4459.93
Wind Mill (State +Private)	19.36	2.17	0.22	960.47	982.22
PURCHASES (IPPs+Captives)	983.59	523.75	106.23	588.11	2201.69
Actual Drawals from CPSUs + Bilateral Power + Inter-Regional Power (Ex-bus including losses**)	946.13	727.60	472.87	1561.89	3708.49
Internalised STOA		0.00			
Total	5236.82	3104.94	1202.08	5972.24	15516.08

	NET EX-BUS CONSUMPTION				
	Ex-Bus Hydro	1641.50	1146.84	605.05	740.99
Ex-Bus Thermal(Coal+Gas+Diesel)	1476.82	631.72	11.24	1891.38	4011.16
Wind Mill (State +Private)	19.36	2.17	0.22	960.47	982.22
PURCHASES (IPPs+Captives)	983.59	523.75	106.23	588.11	2201.69
Actual Drawals from CPSUs + Bilateral Power + Inter-Regional Power (Ex-bus including losses**)	946.13	727.60	472.87	1561.89	3708.49
Internalised STOA		0.00			
Ex-Bus Consumption	5067.40	3032.07	1195.62	5742.85	15037.94

** Losses are transmission losses in CTU/wheeling losses.

Note: Actual (Gross) and Ex-bus Consumption are computed values.

4. दक्षिण क्षेत्र में अधिसूचित कटौतियाँ एवं कृषि क्षेत्र के लिए विद्युत प्रतिबंध

NOTIFIED POWER CUTS AND RESTRICTIONS ON POWER SUPPLY TO AGRICULTURAL SECTOR IN SOUTHERN REGION

The details of notified power cuts and restrictions on power supply to the agricultural sector for the month of July 2007 as reported by the constituents in respect of the Southern Region are given below :

I) अधिसूचित विद्युत कटौतियाँ NOTIFIED POWER CUTS

1	आंध्र प्रदेश ANDHRA PRADESH	NIL
2	कर्नाटक KARNATAKA	NIL
3	केरल KERALA	NIL
4	तमिल नाडु TAMIL NADU	NIL

II कृषि उपभेक्ताओं को जुलाई 2007 में विद्युत की दैनिक आपूर्ति

DAILY POWER SUPPLY TO AGRICULTURAL CONSUMERS IN JULY 2007

Per Day Values

राज्य State	Three Phase	Single Phase	No Supply
आंध्र प्रदेश Andhra Pradesh	7 hrs	No Single Phase Supply	
कर्नाटक Karnataka	9 hrs	8 hrs	7 hrs
केरल Kerala	24 hrs	0 hrs	0 hrs
तमिल नाडु Tamil Nadu	14 hrs	10 hrs	0 hrs

In Tamil Nadu "all welding sets in L.T. services irrespective of connected load should not work between 6 p.m. and 8-30 p.m. in the evening."

5.0 विद्युत विनिमय ENERGY EXCHANGES

5.1 Intra regional energy exchanges in MU using ISTS, Wheeled energy through SR (Schedule Energy), Actual energy exchanges in MU are given in Annexure- III

5.2 INTER REGIONAL ENERGY EXCHANGES USING ISTS

EXPORT IN MU

	July-07				Cum. from April 2007			
	VIA WR		VIA ER		VIA WR		VIA ER	
	At Seller Periphery	At Buyer Periphery	At Seller Periphery	At Buyer Periphery	At Seller Periphery	At Buyer Periphery	At Seller Periphery	At Buyer Periphery
From	To							
ANDHRA PRADESH	4.350	4.182	4.713	4.540	6.138	5.907	18.489	17.813
KARNATAKA	0.292	0.281	60.321	58.448	0.292	0.281	60.321	58.448
KERALA	0.000	0.000	0.000	0.000	47.079	45.249	32.195	31.029
TAMIL NADU	0.000	0.000	117.530	113.638	14.450	13.922	119.180	115.232
IPPs/CPPs	88.260	85.422	9.303	8.996	399.694	384.477	146.870	141.365
TOTAL SOUTHERN REGION	92.902	89.885	191.867	185.622	467.653	449.836	377.055	363.887

IMPORT IN MU

	July-07				Cum. from April 2007			
	VIA WR		VIA ER		VIA WR		VIA ER	
	At Seller Periphery	At Buyer Periphery	At Seller Periphery	At Buyer Periphery	At Seller Periphery	At Buyer Periphery	At Seller Periphery	At Buyer Periphery
To	From							
ANDHRA PRADESH	11.950	9.733	0.000	0.000	120.810	113.989	30.640	29.397
KARNATAKA	0.000	0.000	0.000	0.000	18.928	18.143	67.244	64.637
KERALA	0.000	0.000	0.000	0.000	0.000	0.000	0.000	0.000
TAMIL NADU	0.000	0.000	0.000	0.000	12.619	12.085	214.102	205.735
IPPs/CPPs	0.000	0.000	0.000	0.000	0.000	0.000	0.000	0.000
TOTAL SOUTHERN REGION	11.950	9.733	0.000	0.000	152.357	144.217	311.986	299.769

Details are furnished at Annexure-IV

.द्विपक्षीय विनिमय के साथ साथ, कुल पात्रता / शेड्यूल / वास्तविक ड्रावल- मि यू में

TOTAL ENTITLEMENT/SCHEDULE/ACTUAL DRAWAL INCLUDING BILATERAL IN MU

	Entitlement from Grid	Total Schedule from Grid	Net Schedule from Grid	Actuals
Andhra Pradesh	1079.482	1031.718	1012.417	946.127
Karnataka	861.803	856.39	718.185	727.599
Kerala	602.831	578.353	503.850	472.874
Tamil Nadu	1307.161	1306.643	1261.096	1398.818
Pondicherry	167.577	167.291	167.291	163.076
Goa	53.438	53.428	53.428	51.613
Orissa	122.503	122.491	122.491	122.491
PGCIL	3.687	3.673	3.673	1.682
Total	4198.482	4119.987	3842.431	3884.280

Note

Entitlement : includes entitlements from RSTPS-NTPC, Neyveli II Stage I & II, Neyveli TS I Expansion , Talcher Stage II, schedules of ER Power and actuals of MAPS and KGS. This does not include bilateral exchanges.

Schedule : includes schedules from RSTPS-NTPC, Neyveli II Stage I & II, Neyveli TS I Expansion, Talcher Stage II, ER Power and actuals of MAPS and KGS.

Total schedule does not include of bilateral exchanges.

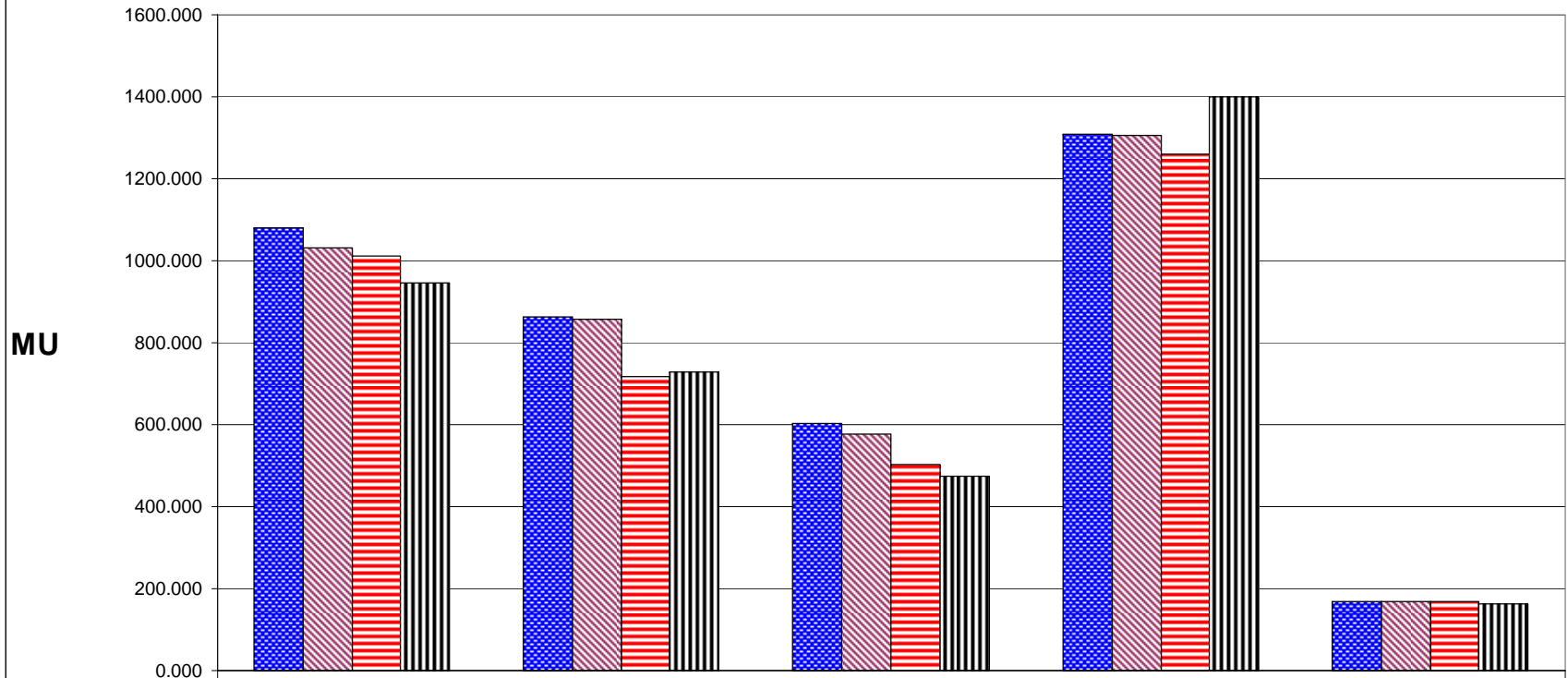
Net schedule includes schedule of bilateral exchanges.

Actuals: 1. Goa actuals include 0.00 MU scheduled at Chandrapur West Bus

2. Actuals are at Generator Ex bus periphery.

Sl.No.	Meeting	Place	Date
1	13 th - Operation Coordination Committee	Bangalore	10.07.2007
2	System Study Sub-committee	Bangalore	17.07.2007
3	1st- Sub-committee on Synchronous Condenser Mode of Operation of Hydro Machines in SR	Bangalore	23.07.2007
4	4th - Commercial Committee	Bangalore	31.07.2007

Actual Drawal-July 2007



	Andhra Pradesh	Karnataka	Kerala	Tamil Nadu	Pondicherry
Entitlement from Grid	1079.482	861.803	602.831	1307.161	167.577
Total Schedule from Grid	1031.718	856.39	578.353	1306.643	167.291
Net Schedule from Grid	1012.417	718.185	503.850	1261.096	167.291
Actuals	946.127	727.599	472.874	1398.818	163.076

8. केन्द्रवार उत्पादन

STATIONWISE GENERATION

Type	Sector	Power Station	Installed Capacity-MW	Effective Capacity- MW	Generation July 06 (MU)	July-07		
						Maximum Generation (MW)	Generation (MU)	Cumulative Generation from April-07(MU)
Andhra Pradesh								
Hydro	State	Machkund	3x23 + 3x17 = 120x0.7 (70% share)	84.00	43.160	45	15.370	52.160
Hydro	State	T.B. Dam & Hampi	8 x 9 = 72 x 0.8(80% share)	57.60	7.111	40	13.174	13.924
Hydro	State	Upper Sileru	4 x 60	240.00	43.487	180	39.473	161.108
Hydro	State	Donkarai	1 x 25	25.00	5.480	20	7.554	34.596
Hydro	State	Lower Sileru	4 x115	460.00	94.290	300	101.160	395.450
Hydro	State	Srisaillam	4x110 + 3x110	770.00	214.200	637	424.043	574.995
Hydro	State	Srisaillam LBPH	6x150	900.00	273.854	978	587.224	681.544
Hydro	State	Nagarjunasagar	1x110 + 7x100 .8	815.60	194.436	890	451.106	467.043
Hydro	State	Nagarjunasagar RCPH	3 x 30	90.00	1.795	60	3.135	3.135
Hydro	State	Nagarjunasagar LCPH	2 x 30	60.00	3.058	54	3.350	3.350
Hydro	State	Nizamsagar	2 x 5	10.00				
Hydro	State	Pochampad	3 x 9	27.00		14	0.100	4.374
Hydro	State	Penna Ahobilam	2 x 10	20.00				
Hydro	State	Singuru	2x7.5	15.00				0.936
Hydro	State	Mini Hydro			0.434			0.198
		Total Hydro		3574.20	881.305	3218	1645.689	2392.813
Coal	State	Kothagudem A	4 x 60	240.00	156.352	234	148.687	609.818
Coal	State	Kothagudem B	2 x 120	240.00	142.871	220	136.535	569.065
Coal	State	Kothagudem C	2 x 120	240.00	151.745	221	90.350	572.063
Coal	State	Kothagudem D	2 x 250	500.00	364.841	506	236.010	1295.608
Coal	State	Ramagundam B	1 x 62.5	62.50	39.890	64	45.072	174.172
Coal	State	Nellore	1 x 30	30.00				
Coal	State	Vijayawada 1	2 x 210	420.00	284.960	420	157.310	1018.290
Coal	State	Vijayawada 2	2 x 210	420.00	260.900	427	232.990	1100.080
Coal	State	Vijayawada 3	2 x 210	420.00	311.260	431	297.300	1213.100
Coal	State	Rayalaseema	2 x 210	420.00	285.529	433	194.785	936.999
Coal	State	Rayalaseema B	1x210	210.00		229	52.968	119.468
		Total Coal		3202.50	1998.348		1592.007	7608.663
Gas	State	Vijjeswaram stage II		172.00	33.570			215.669
Gas	State	Vijjeswaram stage I	2x33 + 1x34	100.00	102.346	95	50.042	163.522
		Total Gas		272.00	135.916		50.042	379.191
		Total Thermal			2134.264		1642.049	7987.854
Wind	State	Wind Mill (State)		2.00	0.222			
		Total State			3015.791		3287.738	10380.667

Type	Sector	Power Station	Installed Capacity-MW	Effective Capacity- MW	Generation July 06 (MU)	July-07		
						Maximum Generation (MW)	Generation (MU)	Cumulative Generation from April-07(MU)
RES	Private	Mini Hydel		101.40	21.772		5.077	26.213
RES	Private	Waste Heat Recovery Cogeneration(RCL)		41.00	31.683		29.742	106.469
RES	Private	Bagasse Based Co-Generation		151.50				
RES	Private	Biomass Based Power Projects		178.50				
RES	Private	Biomass Based Co-Generation		20.43	124.367		99.965	484.387
RES	Private	Municipal waste based power projects		12.60				
RES	Private	Industrial waste based power projects		8.50				
RES	Private	Mini Power Plants (Thermal)		74.31			15.435	64.424
Gas	Private	Isolated Gas Wells		27.04				
Gas	Private	Jegurupadu	2x45.8+1x48.9+1x75.5	216.82	98.057		101.285	485.761
Gas	Private	Jegurupadu -II	140	140.00				
Gas	Private	Spectrum	1x46.8+2x46.1+1x68.88	208.31	99.165		113.151	475.284
Gas	Private	Kondapalli (LANCO)	2x115+1x125	351.49	166.388		191.286	725.078
Gas	Private	BAPL(BSES)	1x140+1x80	220.00	66.145		85.741	414.338
Gas	Private	GMR Vemagiri	1x137					
Wind	Private	Wind Mill		99.49	21.772		19.362	39.399
Captive	Private	Vizag Steel Plant			10.968		1.807	20.350
Captive	Private	Nav Bharat Ferro						22.406
Captive	Private	M.H.W.P.						0.036
		Total Purchase		1851.39	640.317		662.851	2864.145
		Simhadri(NTPC)(Relief)	2x500	1000.00	513.287		340.102	2366.925
		Total		1000.00	4169.395		4290.691	15611.737
Pump Mode	State	Srisaillam (Pump Mode)			18.421			

Karnataka

Hydro	State	Sharavathi	10 x 103.5	1035.00	320.870	#	427.640	1676.090
Hydro	State	Linganamakki Dam PH	2 x 27.5	55.00	12.660	#	20.580	58.430
Hydro	State	Jog (MGHES)	4x18 + 4x12	120.00	26.370	#	30.030	88.640
Hydro	State	Nagjhari	3x150+3x135	855.00	185.140	#	132.100	926.220
Hydro	State	Supa	2 x 50	100.00	19.800	#	12.250	127.390
Hydro	State	Varahi	2 x 115	230.00	105.110	#	149.190	498.270
Hydro	State	Bhadra	1x7+ 2x12 + 1x2+6	39.00	4.150	#	0.360	3.910
Hydro	State	Sivasamudram	6x3 + 4x6	42.00	30.150	#	31.240	81.840
Hydro	State	Shimsha	2 x 8.6	17.20	7.230	#	10.830	19.020

Type	Sector	Power Station	Installed Capacity-MW	Effective Capacity- MW	Generation July 06 (MU)	July-07		
						Maximum Generation (MW)	Generation (MU)	Cumulative Generation from April-07(MU)
Hydro	State	Munirabad	3 x 9	27.00	5.150	#	10.240	10.240
Hydro	State	T.B.Dam & Hampi	8 x 9 (20% share)	14.40	3.200	#	3.860	4.180
Hydro	State	Ghataprabha	2 x 16	32.00	3.220	#	2.660	4.040
Hydro	State	Mani Dam	2 x 4.5	9.00		#	0.310	8.750
Hydro	State	Mini Hydro	1.40 + 0.35	1.75		#		
Hydro	State	Mallapur	2 x 4.5	9.00		#		
Hydro	State	Kadra	3x50	150.00	77.640	#	78.520	143.770
Hydro	State	Kodasalli	3x40	120.00	49.310	#	50.160	123.740
Hydro	State	Gerusoppa(Sharavathi tail Race)	4x60	240.00	51.640		61.960	185.200
Hydro	State	Almatti	1X15+5X55	290.00	171.990		136.490	148.520
		Total Hydro		3386.35	1073.630	#	1158.420	4108.250
Coal	State	Raichur TPS (Gross)	7 x 210	1470.00	902.154	#	693.008	3562.964
Diesel	State	Yelahanka Diesel (Relief)	6 x 21.3	127.80				96.150
		Total Thermal			902.154		693.008	3659.114
Wind	State	Kappatagudda		3.40	2.445		2.166	4.496
Wind	State	Wind Mill(Others)		1.16				
		Total State		1602.36	1978.229	#	1853.594	7771.860
LSFO	Private	Bellari (Rayalaseema)		27.80				12.600
LSFO	Private	TATAS	5x16.26	81.30				47.380
Naphta	Private	Tanir Bhavi		220.00				96.900
Diesel	Private	ITPL Diesel	9	9.00			455.000	1182.000
RES	Private	Co Generation	207.55	207.55				
RES	Private	Bio Mass	50.3	50.30	331.000			
RES	Private	Mini Hydel	128.33	128.33				
Wind	Private	Wind Mill	312.92	312.92		#		
Captive	Private	Jindal	100	100.00	116.100		68.750	447.690
		Total Purchase		1137.20	447.100		523.750	1786.570
		Total			2425.329		2377.344	9558.430

Kerala

Hydro	State	Kuttiadi+KES	3 x 25+50	125.00	87.217	124.00	84.143	172.311
Hydro	State	Sholayar	3 x 18	54.00	3.694	55	7.184	60.705
Hydro	State	Poringalkuthu+PLBE	4 x 8+16	48.00	36.575	50	35.702	75.419
Hydro	State	Pallivasal	3x5 + 3x7.5	37.50	21.533	32	21.453	75.150
Hydro	State	Sengulam	4 x 12	48.00	19.598	50	18.910	50.091
Hydro	State	Panniar	2 x 15	30.00	17.213	33	23.331	45.487
Hydro	State	Neriamangalam	15+17.5+18	50.50	25.814	54	38.802	92.944
Hydro	State	Sabarigiri	5 x 50+1x60	310.00	133.165	270	81.783	431.115
Hydro	State	Idukki	3 x 130 + 3 x 130	780.00	131.150	650	79.520	906.075
Hydro	State	Idamalayar	2 x 37.5	75.00	20.652	72	46.217	127.792

Type	Sector	Power Station	Installed Capacity-MW	Effective Capacity- MW	Generation July 06 (MU)	July-07		
						Maximum Generation (MW)	Generation (MU)	Cumulative Generation from April-07(MU)
Hydro	State	Kallada	2 x 7.5	15.00	5.095	8	3.318	8.132
Hydro	State	Peppara		3.00	1.066		1.335	1.910
Hydro	State	Madupetty	1x2	2.00				1.880
Hydro	State	Malampuzha	1x2.5	2.50				
Hydro	State	Lower Periyar	3x60.0		114.196	188	125.492	202.054
Hydro	State	Kakkad	2x25	50.00	24.412	55	19.984	76.180
Hydro	Private	Maniyar (Pvt)	3 x 4	12.00	6.100		4.621	12.726
Hydro	Private	Kuthungal (Pvt)	3x7	21.00	2.744		8.299	17.429
Hydro	State	Chembukadav	09X3+1.25X3	6.45	3.330		2.816	3.324
Hydro	State	Urumi I & II	3x1.25+3x0.8	6.15	3.817		3.523	5.178
Hydro	State	Malankara	3X3.5	10.50	2.065		3.865	15.560
Hydro	State	Lower Meenmutty	1x1.5	1.50	0.874		0.869	1.603
		Total Hydro		1688.10	660.310		611.166	2383.065
LSHS	State	Brahampuram	5x21.32	106.60	2.360		3.612	30.772
LSHS	State	Kozhikode	8X16	128.00	2.150		7.974	82.377
		Total Thermal		234.60	4.510		11.586	113.149
Wind	State	Wind Mill	9x0.225	2.03	0.276		0.220	0.819
		Total State			665.096		622.972	2497.033
Naphta	Central	Kayamkulam RGCCPP, NTPC## (Combined Cycle)	2x116.6+1x126.38	359.58	10.144		107.922	622.351
Naphta	Private	BSES, KOCHI: (Eloor Power Project)	3X40.5+1X35.5	157.00			0.173	148.714
Diesel/LSHS	Private	Kasargode Power Corporation Ltd.	3x7.31	21.93			1.376	21.444
		Total Purchase		538.51	10.144		109.471	792.509
		Total			675.240		732.442	3289.543

Tamil Nadu

Hydro	State	Pykara	3x6.65 +2x11 + 2x14	70.00	25.428	43.7	23.560	46.435
Hydro	State	Pykara Micro	1x2	2.00	0.555	2	1.281	2.392
Hydro	State	Pykara Ultimate Stage (PUSHEP)	3x50	150.00	1.873	154	86.287	141.638
Hydro	State	Moyar	3 x 12	36.00	12.266	36	24.536	53.152
Hydro	State	Maravakandi	1 x 0.7	0.70	0.120	0.6	0.408	0.692
Hydro	State	Kundah I	3 x 20	60.00	39.187	60	30.098	110.793
Hydro	State	Kundah II	5 x 35	175.00	100.418	173	91.300	301.771
Hydro	State	Kundah III	3 x 60	180.00	59.208	158	52.969	177.382
Hydro	State	Kundah IV	2 x 50	100.00	37.585	100	51.265	80.254
Hydro	State	Kundah V	2 x 20	40.00	11.107	40	4.883	32.098
Hydro	State	Suruliyar	1 x 35	35.00	7.051	36	11.363	20.735
Hydro	State	Kadamparai	4 x 100	400.00	60.380	400	58.215	92.228

Type	Sector	Power Station	Installed Capacity-MW	Effective Capacity- MW	Generation July 06 (MU)	July-07		
						Maximum Generation (MW)	Generation (MU)	Cumulative Generation from April-07(MU)
Hydro	State	Aliyar	1 x 60	60.00	38.882	60	31.569	54.638
Hydro	State	Poonachi	1 x 2	2.00	0.762	0.9	0.676	0.740
Hydro	State	Mettur Dam	4 x 10	40.00	8.265	39	9.718	25.991
Hydro	State	Mettur Tunnel	4 x 50	200.00	132.532	207	62.586	72.708
Hydro	State	Lower Mettur HEP I	2 x 15	30.00	19.640	27	7.867	11.413
Hydro	State	Lower Mettur HEP II	2 x 15	30.00	19.490	28	7.907	11.762
Hydro	State	Lower Mettur HEP III	2 x 15	30.00	18.668	26	7.820	10.537
Hydro	State	Lower Mettur HEP IV	2 x 15	30.00	15.008	20	5.843	9.625
Hydro	State	Bhavani Sagar-Micro	4 x 2	8.00	5.914	8	5.870	17.958
Hydro	State	Periyar	4 x 35	140.00	59.402	62	38.249	41.559
Hydro	State	Vaigai	2 x 3	6.00	1.938	6	1.698	1.771
Hydro	State	Papanasam	4 x 7	28.00	18.389	31.2	17.880	34.189
Hydro	State	Servalar	1 x 20	20.00	4.129	20.1	6.758	9.544
Hydro	State	Sarkarpathy	1 x 30	30.00	0.005	22.6	2.426	27.427
Hydro	State	Sholayar I	2 x 35	70.00	37.240	72	52.496	76.211
Hydro	State	Sholayar II	1 x 25	25.00	14.124	25	13.820	13.850
Hydro	State	Kodayar I	1 x 60	60.00	18.233	28	14.048	56.031
Hydro	State	Kodayar II	1 x 40	40.00	9.817	40.9	10.922	26.352
Hydro	State	Lower Bhavani RBC		8.00	3.175	8	0.928	3.471
Hydro	State	Sathanur	1x7.5	7.50		4	0.006	0.006
Hydro	State	Parson's Valley	1x30	30.00	11.200	30	6.232	14.846
Hydro	State	Mukurthi Micro	0.7	0.70	0.063	0.3	0.106	0.320
Hydro	State	Thirumoorthy	0.65x3	1.95				0.269
Hydro	State	Lower Aliyar			0.579	0.2	0.096	1.442
Hydro	State	Bhavani Kattalai Barrage	1x15	15.00		26	5.827	6.935
Hydro	State	Amaravathi Micro				4	0.771	0.771
Hydro	State	Perunchani Micro				0.6	0.195	0.195
		Total Hydro		2160.85	792.633		748.479	1590.131
Coal	State	Ennore	2x60 + 3x110	450.00	118.324	260	147.560	530.350
Coal	State	Tuticorin	5 x 210	1050.00	619.900	1075	670.820	2863.350
Coal	State	Mettur	4 x 210	3660.85	526.090	850	532.916	2334.723
Coal	State	North Chennai	3 x 210	630.00	425.310	660	339.160	1598.620
		Total Coal		2970.00	1689.624		1690.456	7327.043
Gas	State	Basin Bridge	4 x 30	120.00		99.3	3.283	38.278
Gas	State	Kovil Kalappal	1x70+1x37	107.88	56.045	92	62.839	254.713
Gas	State	Valathur	1X60+1X34	3827.88	65.931	93	64.886	235.023
Gas	State	Kuttalam	1x64+1x37		62.725			

Type	Sector	Power Station	Installed Capacity-MW	Effective Capacity- MW	Generation July 06 (MU)	July-07		
						Maximum Generation (MW)	Generation (MU)	Cumulative Generation from April-07(MU)
		Total Gas		422.88	184.701		131.008	528.014
		Total Thermal		3392.88	1874.325		1821.464	7855.057
Wind	State	Wind Mill (State)			3.643		2.361	6.234
Solar	State	Solar (State)						
		Total State		5573.09	2670.601		2572.304	9451.422
LSHS	Private	GMR Vasavi	4x49	196.00	57.158	192	76.340	391.956
LSHS	Private	Samalpatty	7x15	105.66	19.544	105.6	28.676	173.648
LSHS	Private	Madurai PCPL		105.66	18.986	105.9	28.999	168.172
Naphta/ NG&N	Private	Pillai Perumal Nallur		330.50	26.704	330.5	76.961	678.226
Wind	Private	Wind Mill + Biomass	1342		778.172		958.107	2310.464
Diesel/ LSHS	Private	TCPL		63.50	41.093		40.656	160.339
Diesel/ LSHS	Private	HITEC		15.00	6.633		4.574	21.083
Diesel/ LSHS	Private	Manali			1.437		2.228	7.360
Lignite	Private	Neyveli STCMS Unit		250.00	136.671	250.6	150.745	574.376
Gas	Private	ABAN	1x74.1+1x38.81	113.21	74.690	116	71.958	270.726
RES	Private	Cogeneration			56.000		76.000	300.000
RES	Private	Solar		246.60				
Cogen	Private	Other CPPs		6999.22				
Gas	Private	Arkay Energy Ltd.		52.80	32.512	51	28.976	109.688
		Total Purchase			1249.600		1544.220	5166.038
Lignite	Central	Neyveli TS I	6x50 + 3x100	600.00	316.749	482	291.825	1330.352
		Total		7652.02	4236.950		4408.349	15947.812
Pump Mode	State	Kadamparai (Pump mode)			42.222			31.370

Puducherry

Diesel	Central	Karaikal Combined Cycle Diesel Power Plant	1x32.5	32.50	23.840		21.855	91.519
--------	---------	--	--------	-------	--------	--	--------	--------

Central Sector

Coal	Central	Ramagundam STPS	3x200 + 4x500	2600.00	1464.356		1559.049	6961.350
Lignite	Central	Neyveli TS II	7 x 210	1470.00	769.083		1008.220	4022.472
Lignite	Central	Neyveli TPS - I Exp.	2x210	420.00	263.570	428	298.845	1146.349
Coal	Central	Talcher Stage II-NTPC	4x500	2000.000	1396.765		1293.020	5425.928
Nuclear	Central	MAPS (Kalpakkam)		390.000	181.711		86.097	655.937
Nuclear	Central	Kaiga GS	3x220	660.000	168.287		228.033	984.439
		TOTAL		7540.000	4243.772		4473.264	19196.475
		State Hydro-Total			3407.88		4163.75	10474.26
		State Thermal-Total			4915.25		4168.11	19615.17
		State Others- Total			6.59		4.75	11.55
		State Purchase- Total			2860.45		3180.39	12976.19
		ISGS-Coal/Lignite- Total+NLC TS-I & Pandy			4234.36		4472.81	18977.97
		ISGS Nuclear- Total			350.00		314.13	1640.38
		SR- Grand Total			15774.53		16303.95	63695.51

9. प्रमुख जलाशयों में संचयन की स्थिति

STORAGE POSITION IN MAJOR HYDEL RESERVOIRS

Reservoir	F.R.L.in mtrs.	Energy in MU at FRL	MDDL in M	As on July-07			Cumulative inflow from April 07	As on July-06		
				Level in M	Energy in MU	Inflow in MU		Level in M	Energy in MU	Inflow in MU
Andhra Pradesh										
Jalaput	838.40	495	818.39	834.85	389	165	396	830.48	227	82
Srisaillam	270.70	-	243.84	267.16	925	2157	2648	268.01	1005	1512
Nagarjunasagar	179.90	-	156.97	179.01	1068	-	-	171.26	661	
Karnataka										
Linganamakki	554.50	4547	522.73	551.41	3619	2591	3598	551.44	3628	2421
Supa+Bommanhalli+Tattihalli	564.00	3152	495.00	545.05	1651	922	1275	553.60	2263	1298
Kerala										
Idukki	732.43	2190	694.94	722.29	1423	994	1465	714.66	907	558
Kakki+Pampa	981.45	916	908.30	972.55	596	501	742	964.98	437	357
Total		4083		-	2844	2680	3767		1990	1488
Tamil Nadu										
Nilgiris		1504		-	1474	1006	1766		1226	717
Total		2182.87		-	1998	1627	2685		1621	1049
Mettur	240.79	210.02		-	54	249	266		164	178

10. जुलाई 2007 में मुख्य तापीय / नाभिकीय केंद्रों का कार्य निष्पादन

PERFORMANCE OF IMPORTANT THERMAL/NUCLEAR PLANTS IN JULY 2007

STATE/STATION	Installed Capacity (MW)	Plant Load Factor (%)	Plant Availability Factor (%)
ANDHRA PRADESH			
Kothagudam	1180.00	69.66	79.65
Vijayawada	1260.00	73.35	78.38
Rayalaseema	420.00	62.34	52.82
KARNATAKA			
Raichur	1470.00	63.36	84.46
TAMIL NADU			
Ennore	450.00	44.07	62.82
Tuticorin	1050.00	85.87	94.39
Mettur	840.00	85.27	87.88
North Chennai	630.00	72.36	73.79
ISGS			
Ramagundam STPS: NTPC	2600.00	80.60	83.23
Neyveli TS II	1470.00	92.19	96.77
Neyveli TS I Expansion	420.00	95.64	100.00
MAPS (Nuclear)	440.00	26.30	
Kaiga GS (Nuclear)	440.00	46.44	49.93
CGS			
Simhadri, NTPC	1000.00	49.82	50.12
Neyveli TS I	600.00	65.37	84.25

11. क्षेत्रीय ग्रिड प्रचालन REGIONAL GRID OPERATION

11.1 फ्रीक्वेन्सी प्रोफाइल Frequency Profile

The Grid frequency profile is as follows:

Percentage of time when frequency was between

Frequency Range	< 48.5	48.5 to 49.0	>49.0 to 49.5	>49.5 to 50.0	>50.0 to 50.5	> 50.5	IEGC Range
July-06	0.00	0.77	17.35	48.59	33.24	0.05	99.18
July-06	0.00	0.48	7.75	53.66	38.00	0.11	99.41

Maximum	50.76	8th July 2007
Minimum	48.57	24th July 2007
Average	49.76	

11.2 VOLTAGE PROFILE AT IMPORTANT 400 KV NODES OF REGIONAL GRID IN KV

400 KV Station	July-07		June-07	
	Average of		Average of	
	MAX	MIN	MAX	MIN
Hyderabad	415	401	416	399
Ramagundam	413	405	412	404
Nagarjunasagar	422	409	421	391
Cuddapah	420	400	422	401
Vijayawada	426	410	412	394
Gooty	416	401	415	399
Gazuwaka	422	410	423	414
Bangalore	417	391	416	392
Kolar	422	398	422	402
Narendra	414	400	417	401
Thiruvananthapuram	422	400	420	399
Thrissur	416	391	413	393
Chennai	415	388	413	389
Hosur	413	391	412	392
Neyveli II	411	399	411	400

11.3 टाई लाइनों का प्रचालन **Operation of Tie Lines**

i) PGCIL

The availability of the transmission elements as furnished by PGCIL is given below:

	Element Name	Percentage Availability for April 07	Cumulative % Availability from April 07
A.	Intra Regional AC System	99.89	99.71
B.	Intra Regional DC System	99.65	94.58
C.	Inter Regional AC System (SR-WR)	96.90	97.91
D.	Inter Regional AC System (SR-ER)	100.00	99.71
E.	Inter Regional HVDC System (SR-WR) (till May 07)	100.00	99.99
F.	Inter Regional HVDC System (SR-ER)	100.00	99.13
G.	Kayamkulam System	99.55	99.89

Details are given at Annexure- V

Inter State Lines Owned by State Utilities (220 kV)

1	Alipur – Gooty (KAR – AP)	001 50
2	Sedam – Tandur (KAR - AP)	027 40
3	Chittoor – Tiruvalam (AP - TN)	014 48
4	Sulurpet –Gummidipoondi (AP - TN)	005 52
5	Yerrandanahalli- Hosur (KAR - TN)	000 41
6	Idukki – Udumalpet (KER - TN)	029 01
7	Edamon – Kayathar (KER - TN)	025 08
8	Moozhiyar – Theni (KER - TN)	008 32
9	Mysore – Kaniampetta (KAR - KER) Kadakola	013 24

Inter Regional Lines Owned by State Utilities (220 kV)

1	Upper Sileru -Balimela (AP-ORISSA)	000 00
2	Lower Sileru – Barsur (AP – CSEB)	000 00
3	Chikkodi – Kolhapur (KAR – MAH) Ckt-I	744 00
4	Chikkodi – Kolhapur (KAR – MAH) Ckt-II	744 00

11.4 शंट कैपासिटर्स की स्थापना**Installation of Shunt Capacitors****A. एच टी कैपासिटर्स****HT CAPACITORS**

Figures in MVAR

	As on 31-3-2007	Programme of utilities for 2007 – 2008	July-07	Cumulative for 2007-08
APTRANSCO	6583.4	-	15	15
KPTCL	4312.35	-	0	0
KSEB	1005	-	0	0
TNEB	3947.5	-	0	0
Total Region	15848.25	-	15	15

11.5 ग्रिड अलगाव**Grid Separations**

NIL

11.6. ग्रिड बाधाएँ**Grid Disturbances**

NIL

11.7The Allocations for SR Beneficiaries and others from ISGS stations is at **ANX-**

12. दक्षिण क्षेत्र की नई उत्पादन योजनाओं की प्रगति की समीक्षा

REVIEW OF PROGRESS OF WORKS ON ONGOING/NEW GENERATION SCHEMES IN SOUTHERN REGION

Type	Sector	Station	Capacity (MW)	Progress/Status
Andhra Pradesh				
Hydro	Private (Inter state)	Inter-State Power Plants (Mini Hydel) (M/s. NCL Energy Ltd.- RB High level canal of TB Dam, Bellary Distt. Karnataka, 80%(6.60MW) to AP & 20% (1.65 MW) to Karnataka)	8.25	8.25 MW commissioned up to 31.03.2006
Hydro	State	Pochampad Expansion-4th Unit	9	--
Gas based	Private	Isolated ONGC Gas Wells	27.42	27.04 MW commissioned .
RES	Private	Municipal Waste based	30.343	12.6 MW commissioned up to 1.7.07,
RES	Private	Bio - mass based co-generation	46.3	29.25 MW Commissioned up to 30.06.2007.
Hydro	State	Tail Pond PH at Nagarjunasagar	50	Unit 1 Mar 2009,Unit 2 July-2009
RES	Private	Industrial waste based	56.48	14.5 MW commissioned up to 1.7.07.
RES	Private	Mini Hydel Projects (H)	117.1025	101.4 MW commissioned up to 1.7.07.
Thermal	State	Pulichintalla	120	2009-10
Thermal	State	Singareddipalli	200	12th Plan
Thermal	Private	GVK Extension - 2	220	2009-2010
Gas based	Private	GVK Extn.Project (Stage-I)	220	Project is ready for testing and commissioning depending on when the natural gas is made available by GAIL
Hydro	State	Jurala HES (Priyadarsini)	234	U-1 - June 2007, U-2 - Oct 2007, U-3 -Feb-08, U-4 - June. 2008, U-5 -Oct. 2008, U-6 - Feb 09
Hydro	State	Lower Jurala	240	2010-11 (LOA to be placed)
RES	Private	Bagasse based Co-generation	312.7	174.4 MW commissioned up to 1.7.07,
Wind	Private	Wind Energy (W)	315.37	101.34 MW commissioned up to 30.06.2007,214.03 MW expected in 2007-08
Thermal	State	Dummugudem	320	12th Plan
RES	Private	Bio - mass based power plant	331.5	188.5 MW Commissioned up to 1.07.2007
Thermal	Private	Gauthimi Stage - 2	370	134 MW in 2010-11
Gas based	Private	Vemagiri CCGT Power Project (M/s Vemagiri Power Generation Ltd., Formerly ISPAT Power Ltd.)	370	Project is ready for testing and commissioning depending on when the natural gas is made available by GAIL
Thermal	Private	Vemagiri Stage - 2	370	150 MW in 2010-11
Gas based	Private	M/s Konaseema Gas Based Power Project (Konaseema EPS Oakwell Power Ltd.)	445	Project is ready for testing and commissioning depending on when the natural gas is made available by GAIL (2007-08)

Type	Sector	Station	Capacity (MW)	Progress/Status
Gas based	Private	Peddapuram CCGT Power Project (M/s Gowtami Power Pvt.Ltd. Merged project of Gowtami & NCC)	464	Project is ready for testing and commissioning depending on when the natural gas is made available by GAIL (2007-08)
Thermal	State	Kakatiya TPP (Bhoopalapalli) (T)	500	November-08
Thermal	State	Kakatiya TPP Stage-II	500	March-11
Thermal	Private	Krishnapatnam-A (GVK Power Ltd.)	500	12th Plan
Thermal	State	KTPS Stage-V, Phase-I	500	2009-10
Thermal	Private	Torongalli TPP	500	12th Plan
Thermal	State	Vijayawada (T) Stage-IV	500	November-08
Thermal	Private	Krishnapatnam-B (BBI Power Krishnapatnam Co.) (T)	520	12th Plan
Thermal	Private	Ramagundam TPP	520	12th Plan
Mini PP	Private	Mini Power Plants	595.3	74.312 MW commissioned on 1.7.07.
Thermal	State	Rayalaseema (T) Stage-II	630	Unit I in November 2006 unit-III commissioned 24.1.07 Unit II in Sep 07
Thermal	State	Rayalaseema (T) Stage-III	710	Unit-V in 2009-10, Unit-VI in Feb. 2011-12
Thermal	Private	Krishnapatnam UMPP Unit I	800	11th Plan
Thermal	Private	Krishnapatnam UMPP Unit II	800	11th Plan
Thermal	State	Polavaram	960	Unit 1 Jun. 2011, 2 units at 4 months interval and remaining in 12 Plan
Thermal	Private	Visakhapatnam TPP - HNPCL (T)	1040	11th Plan
Gas	State	Combined cycle gas based project near Karimnagar	2100	1st Module by Dec 2009, balance 2 modules by June 2010
Gas based	State	Hyderabad Metro Gas based Project Shankarapally	2100	U-1 Mar-2009; U-2 Sep- 2009; U-3 May- 2009

Karnataka

Hydro	Private	Pioneer Power	24.5	Commissioned in July 2007
Hydro	Private	Cauveri	4.5	Commissioned in July 2007
Wind	Private	Bharat Petroleum	5	Commissioned in July 2007
Hydro	State	Varahi UG Power House	230	2008-09
Thermal	State	Raichur II TPS	250	2009-10
Thermal	State	Raichur TPS, Unit-8	250	December-09
Hydro	State	Gundia	400	12th Plan
Thermal	State	Bellary Extension	500	October-10
Thermal	State	Bellary -TPS	500	2007-08
Thermal	State	Raichur	500	12th Plan

Type	Sector	Station	Capacity (MW)	Progress/Status
Thermal	private	Thorangallu	600	Unit I & II Oct 2008
Gas based	State	Bidadi Ext.	700	12th Plan
Thermal	Private	Annechakanahalli Phase I	1000	12th Plan
Thermal	Private	Kalpurki Phase I	1000	12th Plan
Thermal	State	Raichur II	1000	12th Plan
Thermal	Private	Yadagiri Phase I	1000	12th Plan
Gas based	Private	Nagarjuna TPP Unit I & II	1015	12th Plan
Gas based	State	Bidadi Combined Cycle Power Plant	1400	11th Plan
Thermal	State	Bellary II Stage II	1500	12th Plan
Thermal	State	Mangalore TPS	1600	12th Plan
Hydro	State	Tattihalli	450MU/Ann um	Project could not be taken up due to local agitation.

Kerala

Hydro	State	Lower Meenmutty	2	1x1.5 Commissioned during 2005-06
Hydro	State	Landrum	3.5	Land to be acquired.
Hydro	State	Kuttiadi Tail Race	3.75	August 2006
Hydro	State	Sengulam Tail Race	4.5	Land to be acquired.
Hydro	Private	Ullunkal SHP(M/s TECIL)	7	Work stopped since 08.03.2001. Board has approved the proposal to take over the
Hydro	State	Barapole	9	Land to be acquired.
Hydro	Private	Karikkayam SHP(M/s TECIL)	15	Work stopped since May 1998. Board has approved the proposal to take over the scheme left incomplete.
Hydro	Private	Bhoothathankettu	16	The irrigation land of 2.18 ha required for the project has not been handed over.
Hydro	State	Neriamangalam Extension	25	July-06
Hydro	State	Chinnar	28	0
Hydro	State	Achankovil	30	12th Plan
Hydro	State	Mankulam	40	2010-11 (LOA to be placed)
Hydro	State	Thottiyar	40	2010-11 (LOA to be placed)
Hydro	State	Pallivasal	60	January-11
Hydro	State	Pallivasal Extn	60	12th Plan

Type	Sector	Station	Capacity (MW)	Progress/Status
Hydro	State	Kuriyarkutty_ Karappara	84	Project is proposed.
Hydro	State	Kuttiadi additional Extn. Scheme	100	October-08
Hydro	State	Athirappilli	163	2010-11
Hydro	State	Chalippuzha and Mananthavady	225	Project is proposed.
Thermal	Private	Kannur	513	11th Plan
Hydro	State	Kuttiyar Diversion (Balance works)	37	June-06
Hydro	State	Azhutha Diversion (Balance works)	57	December-06
			MU/Annum	
			MU/Annum	

Tamil Nadu

Mini Hydel	Private	Pechiparai HEP	1.3	2006-07
Mini Hydel	State	Perunchani Mini HEP	1.3	Commissioned in Jan. 2006 (21.01.2006)
Hydro	Private	Vairavanar Barrage-I (Periyar Vaigai HEP)	6.6	12 th Plan
Hydro	State	Bhavani Barrage (Nellithorai Lower Bhavani) Barrage I and II HEP	20	2009-10
Hydro	State	Kollimalai	20	12th Plan
Hydro	State	Moyar Ultimate Stage	25	12th Plan
Hydro	State	Bhavani Kattalai Barrage II HEP	30	May 2009
Hydro	State	Bhavani Kattalai Barrage III HEP	30	May 2009
Hydro	State	Vaigai	50	12th Plan
Gas based	State	Valuthur GTPP (Addl.)	92	GT Nov 07 ST Feb 2008
Thermal	Private	JGCC Project- Madras Refinery	500	11th Plan (To be firmed up)
Hydro	State	Kundah PSS	500	12th Plan
Thermal	State	Mettur Ext.	500	2010-11
Thermal	State	North Chennai Ext.	500	2010-11
Thermal	State	Tuticorin EXPANSION	1000	12th Plan
Thermal	JV	Tuticorin Stage IV (JV TNEB & NLC)	1000	2010-12
Thermal	JV	Vallur TPP (JV with NTPC)	1000	2010-11

Central

Thermal	Central	Neyveli TS-II (Expansion)(NLC)	500	I Unit- Feb- 2009 II Unit- June- 2009
Thermal	Central	Neyveli TS-II (NLC)	500	2008-10
Thermal	Central	Jayamkondam Lignite(NLC)	1000	12th Plan
Thermal	Central	Neyveli TS-III (NLC)	1000	12th Plan
Thermal	Central	Neyveli TS-III Exp.(NLC)	1000	11th Plan (To be firmed up)
Nuclear	Central	Kaiga Stage-II(NPCIL)	440	Unit -3:March.2007, Unit- 4: 2007-08
Nuclear	Central	Kalpakkam (PFBR)	500	2010-11
Nuclear	Central	Kudankulam(NPCIL)	2000	2008-10

Type	Sector	Station	Capacity (MW)	Progress/Status
Thermal	Central	Simhadri Expansion	1000	2010-11
Gas based	Central	Kayamkulam CCPP Module 1 to 3(NTPC)	1950	11th Plan

13. दक्षिण क्षेत्र में 400 एवं 220/230 कि वो की नई पारेषण लाइनों के निर्माण कार्य की प्रगति की समीक्षा

REVIEW OF PROGRESS OF WORKS ON NEW 400 KV AND 220/230 KV TRANSMISSION LINES UNDER STATE SECTOR IN SR

Sl. No.	Name of the Transmission Line	Date of investment decision by Planning Commission	Length in Circuit Kms.	String-ing completed in c.Kms	Target date of completion	Remarks
ANDHRA PRADESH						
400 KV LINES						
1	Ramagundam (NTPC)-Ditchipally SC line from Putnur to Ditchipally(126 kM), DC line from Ramagundam to Putnur(22kM)	-	170	-	Mar-07	Work under Progress
2	400 kV D/C line for LILO from Ramagundam-Ghanapur 400 kV line to Gajwel		25	-	Dec-07	Tendering activity completed. Bids opened
3	Narasaraopet - Vemagiri D/C		170		Dec-'07	Bid evaluation under progress
4	LILO of Srisailam-Vijayawada at Narasaraopet D/C		1		Dec-'07	Bid evaluation under progress
5	Vemagiri 400KV S/S -Gowthami CCPP		78		Jan-06	Commissioned. Ckt-I on 16.8.06.Ckt-II on 17.8.06
6	400 kV D/C line for LILO from Ramagundam-Ghanapur 400 kV line to Malkaram		64	-	Dec-08	Tendering activity completed. Bids opened
7	Gajwel - Yeddumailaram (DC)		212		Oct-08	Bid evaluation under progress
8	Yeddumailaram- Mampidipalli (DC)		216		Oct-08	Bid evaluation under progress
9	Vemagiri-Konaseema(DC) Ckt-I					Commissioned on 17.7.06
220 KV LINES						
A Hyderabad Circle(Telangana Region)						
1	Installation of 245 KV XLPE UG cable from Asifnagar S/S to Karwan		2.94	2.94	Nov, 2006	Charged on 31.03.2007
2	Sivarampalli-Karwan (DC/SC)		9.5	-	Oct-06	Charged on 31.03.2007
3	Nagarjunasagar (Tallapally) -Narketpally (DC/SC)	8th Plan	96	-		Tenders were cancelled and programmed for 2007-08
4	Tallapalli-Chalukurthy DC/SC line		26	26	May-07	Line works completed.
5	Chalukurthy-Kondamallepalli DC/SC line		43		Feb-07	Charged on 21.07.2007
B Cudappah Circle(Rayalseema Region)						
1	SC two phase line from 220 kV S/s Rajampeta Rajamundry (Rajampeta) RTSS		4.5		2005-06	Works completed.
C Andhra Region						
i Rajahmundry Circle						
1	LILO of Vemagiri from Bommuru- Vijeswaram 220 kV line		2.39	2.39		Line charged
2	Vemagiri - Bhimavaram		125.2	125.2		Charged on 08.01.2007
3	LILO to Kamavarapukota from Vijeswaram VTPS 220 kV DC line		46		Mar-07	Line charged on 25.06.07
4	Erection of 220kV DC/SC line from Garividi 220kV SS to Boddepallipeta		44	43.5	Dec-06	Works completed
5	Erection of 220kV DC/SC line from Boddepallipeta to Tekkali 220kV SS		44		Dec-07	Works under progress
ii Vijayawada Circle						
1	Bhimavaram - Gudiwada (DC) (Bhimavaram end)		50	Nil	Mar-07	Works under progress
2	Bhimavaram - Gudiwada(DC) (Gudiwada end)		72	72		Line test charged on 22.10.2004
3	VTS-Tallapally		130		Sep-07	Works under progress
iii Nellore Circle						
1	LILO from Nellore-Renigunta 220 KV DC line to Nellore 400 KV S/S- 2 nos. 220 KV DC lines.		20.22	19.358	Mar-07	Lines charged on 25.06.07 & 26.06.07
2	Sulurpet- Renigunta (DC/SC) line	7th Plan	55			Tender to be called for balance works.

Sl. No.	Name of the Transmission Line	Date of investment decision by Planning Commission	Length in Circuit Kms.	String-ing completed in c.Kms	Target date of completion	Remarks	
OTHERS							
1	Lower Sileru-Maredumilli	Oct. 78	80	-		Tenders opened & evaluation under progress	
2	Vemagiri - Bommuru 220 KV Line		10	10			
3	Jegurupadu - Nidadavole		20		Admin. Approval is yet to be accorded	PFC loan sanctioned & to be programmed	
4	Ditchipally 400 KV S/S - Ditchipally 220 KV S/S (SC on DC)		20	-	Dec., 07	Work under Progress	
5	Ditchipally 400 KV S/S - Nirmal		70	-	Admin.	Work under Progress	
6	Gajwel - Siddepet (SC on DC)		45	-	Admin. Approval is yet to be accorded	-- Do --	
7	Gajwel -Minpur (SC on DC)		80	-	Admin. Approval is yet to be accorded	-- Do --	
8	Malayalapally - Ramagundam (SC)		10	-	Admin. Approval is yet to be accorded	-- Do --	
9	Gajwel - Kamareddy (SC on DC)		90	-	Dec., 07	Work under Progress	
10	Narasarsopet 440 kV S/S - Narasarsopet 220 kV S/S (D/C)		16		Dec., 07	Tenders to be invited	
11	Narasarsopet 440 kV S/S - Parchur 220 kV S/S (D/C)		110		Dec. 07	Tenders to be invited	
12	Parchur 220 kV S/S - Podili (D/C)		120		Dec. 07	Tenders to be invited	
13	Veltoor 400 kV s/s - Wanaparthy 220 kV s/s		40.41		Dec-07	Work to be taken up	
14	Chittoor 400 kV s/s-Palamaneru 220 kV s/s		59.5		Apr-08	Works awarded on 9.9.2006	
15	Kalpa s/s - Brandix		42		Dec-07	Works in progress	
16	Second circuit stringing on 220 kV Mamidipalli-Yeddumailaram DC/SC line		63		Jun-07	Charged on 24.07.2007.	
17	Ramagunnda-Bellampalli		43		Sep-07	Works in progress	
18	Veltoor 400 kV s/s - Jurala 220 kV s/s		62		Sep-07	Works awarded.Excavation work under progress	
RTPP Evacuation Scheme							
1	RTPP - Pulivendula		80			Tenders to be invited	
2	Pulivendula-- Hindupur		238			Tenders to be invited	
3	LILO to Shadnagar S/S from Mamidippilly-Yeddumallaram DC line		36			Work under Progress	
4	DC line from 400/220kV S/S Oglapur(PGCIL) to 220kV Switching Station at Nagaram village.		18			Tenders to be called for.	
5	DC line from 400/220kV S/S Oglapur(PGCIL) to 220kV S/S at Durshed.		103			Tenders to be called for.	
6	DC line from 400/220kV S/S Oglapur(PGCIL) to 220/11kV S/S at Ramappa.		45			Estimate under preparation.	
KARNATAKA							
A 400 KV LINES							
1	400 KV DC line between BTPS and Hiriyyur		302.3		Mar-06	DPR received on 4-10-05. Work to be tendered.	
2	400 KV LILO line at BTPS Kuditini(DC) & 220 kV LILO from Lingapur-Alipur line to BTPS					Mar-06	220 kV line charged till BTPS end and commissioned on 13.12.2006
3	Construction of 2 TBs for Guttur-Sisi-Kaiga line at Guttur					June, 05	TBs commissioned for Kaiga line1- & for line 2 on 8.9.06

Sl. No.	Name of the Transmission Line	Date of investment decision by Planning Commission	Length in Circuit Kms.	String-ing completed in c.Kms	Target date of completion	Remarks
B 220 KV LINES						
1	Construction of 220 kV DC line from Nelamangala to 220 kV NRS in existing 110 kV SBT corridor partially with multi circuit	-	-	-	Jun-06	DPR under preparation. Target date to be revised.
2	From Somanahally to Loc.No.121 by B'lore MW Div.		28	25	Mar, 07	10 km. line stringing completed and charged
3	From Loc.122 to Malur by Kolar MW Divn.	-	40	24	Mar, 07	LOA to be issued for balance work
4	220 KV DC line from Malur to Kolar	Aug-98	22	22	Mar, 07	LOA issued
5	220 kV DC line with narrow based towers to Nagarbhavi by making LILO of Peenya-S.Pura SC line	-	7	-	Aug-06	Estimate for running cable instead of OH line is prepared. DPR to be approved
6	220 kV DC line to Hoskote (Pillaguppa) by constructing LILO of Hoody-Kolar SC line	-	32	-	Mar-07	Survey Under progress
7	Tallak: 220 kV DC line from Hiriyur 400 kV Station to Tallak	-	61	-	Jun-07	Work under Progress
8	220 kV 2nd circuit line from Somanahalli to T.K.Halli in the existing corridor (SC)	-	63	-		DPR to be approved
9	220 kV DC line from Anchepalya to Tubinkere 220 kV station-Lilo Shimoga-Mysore up to Huyyaganahalli.The line is rerouted as LILO at Uyyaganahalli form Shimoga-Mysore line	-	76	-	Aug. 08	LOI issued.
10	LILO of 220 kV Hoody-Somanahally DC line to proposed 220/66 kV station at Naganathapura	-	0.6	-	Mar-07	LOI issued
11	Construction of 220 kV DC line between 400/220 kV station, Nelamangala and DB pura and providing two Nos. of TBs at Nelamangala and DB Pura.	Nov. 2003	33.71	-	Mar-07	220 kV TB at DB pura Commissioned on 16.07.2007
12	Constuction of 220 kV LILO line from Shimoga-Nelamangala to the proposed 220 kV Nittur station.		0.5			Commissioned on 13-9-2006
13	Hiriyur 400 kV s/s- Gowribidanur 220 kV s/s		121		Apr-07	Work under progress
14	LILO from Harohalli-T.K Halli line to Kanakapura		3.2		Mar-06	Works under progress
15	LILO line from Gowribidanur line to Devanahalli Int. AirPort Station		4.98		Mar-06	Commissioned on 25-11-06
16	ANANDRAO circle 220kv UG cable line from NRS R/S		4		Jun-07	tendered
AUGMENTATION WORKS						
1	Chitradurga: Additional 1x100 MVA 220/66 kV Tr.					Earth excavation under progress
2	Hiriyur Additional 1x100 MVA 220/66 kV Tr.					Earth excavation under progress

Sl. No.	Name of the Transmission Line	Date of investment decision by Planning Commission	Length in Circuit Kms.	String-ing completed in c.Kms	Target date of completion	Remarks
Mysore Zone						
1	220 kV LILO from T.K.Halli-Hootagalli line to Vajamangala	-	-	-	Dec-07	Evaluation under progress
2	Interlinking 220 KV lines from proposed 400 KV station at Bastipura	-	-	-	Jun-07	Commissioned on 2.05.2006
	a) 220 kV LILO line to Bastipura to Hootagalli line					
	b) Bastipura to Shimoga line		27.21		Jun-07	Commissioned on 4.05.2006
	c) Bastipura to Kadakola				Jun-07	Work under progress
3	220 KV SC line on DC Towers from proposed 440/220 KV Bastipura RS to Kushalanagara	-	-	-	Jul-07	Works under progress
4	Construction of 220 kV TBs at 200 kV Kadakola for proposed 220 kV DC line from 400/220 kV station Bastipura.				13.08.2006	DWA issued. Work under progress
Hassan Zone						
1	Construction of 220 kV DC line from Varahi-Shimoga and dismantling of 110 kV SC line	16.07.98	2x100	2x82.5	Mar-06	Work under Progress
2	Terminal Bay at MRS for Varahi to Shimoga line	14.02.2000	-		Mar-06	Work under Progress
3	220 kV line in Shiralakoppa in Shimoga District	-	-	-	May-06	Work to be taken up
4	Construction of 220 kV DC line from Varahi to Kavoov via Khemar in the existing corridor of 110 kV SC, SK line	-	290	-	Mar-06	Work to be commenced
5	a) Construction of 220 MC line from Sharavathi Generating Station to Dugadimane limits. b) Providing 03 Nos. of 220 kV Bays at Sharavathi Generating Station for the above line c) Dismantling of 220 kV SC lines		13.875		Mar-06	Work under progress
6	220 kV DC line tapping from Khemar-Kavoov line to Bykampady OR 220 kV DC line tapping from Tannirbhavi line to Bykampady	-	-	-	Mar-07	DPR is being prepared.
Arasupadavu						
7	a) Guruvayangere - Puttur DC line b) 2 No.220 kV TBs at KhemarSS for Puttur line		-		2005-06	Ready for commissioning
8	220 kV DC LILO line from Shimoga - Mysore line upto proposed 220 kV Huygonahalli station.	-	11.73	-	Jul-07	Work under progress
9	Construction of 220 kV DC LILO line at Yachanahalli in C.R. Patna Tq. tapping from the existing 220 kV line from Shimoga-Mysore line	-	3.23	-	May-06	All works completed
10	Chikkamagalur-Bastipur-220KV LILO to KR Pet R/S				Jul-06	Survey work completed
11	Kadavinakote: Construction of 220 kV line from SMG-Mysore line		16.35		Jul-07	56/59 locations earth excavated. 32/59 locations stub concreted.
Bagalkot Zone						
1	220 kV line from Chikkodi to Kudachi	-	142.11		Mar-07	Notice served to the contractor for slow progress. Yet to resume work
2	220 kV LILO line - from both the circuits of 220 kV Sharavathi-Hubli D/C line to the 220 kV switching station at Sirsi on 220 kV MC towers having 4 circuits.		6.65		Mar-07	charged on 30.07.07
3	220KV Line to Bidnal 1) 220 KV LILO from Hubli- Mahalingapur		1.053		Aug-07	Tender floated

Sl. No.	Name of the Transmission Line	Date of investment decision by Planning Commission	Length in Circuit Kms.	String-ing completed in c.Kms	Target date of completion	Remarks
	2) 220 KV D/C LILO line from Hubli- Gadag		0.441		Aug-07	Tender floated
	3) 220 KV D/C link line between Nag- Hubli		1.365		Aug-07	Tender floated
4	220 KV D/C line Narendra to Mahalingapur				Dec-'07	Tender floated
5	Const. of 220 kV DC and MC lines passing through KIADB land in front of 220 kV Narendra station					Tender floated
6	Indi: Construction of 220 KV DC line from Basavanabagevadi		80		Sep-07	Work under Progress
7	Athani: 220 KV SC LILO line from Mahalingapur-Kudachi line & 110 KV link lines		24		Aug-07	Work under progress
8	Bijapur: construction of 220 Kv LILO line from 220 KV B- Bagevadi -indi		5.8		Sep-07	Work under Progress

Gulbarga Zone

1	220 kV DC LILO line from 220 kV Lingasugur-Shahabad SC line to proposed 220 kV S/S at Shahapur	-	4.025		2005-06	Commissioned on 22-12-2006
2	Proposed 220 kV DC line from RTPS to proposed 220 kV S/S at Shahapur by linking the 220 kV RTPS-Gulbarga DC line	-	1.7		2005-06	Commissioned on 9-12-2006
3	220 kV DC LILO lines to 220 kV S/S at Shahabad from one circuit of 220 kV Shahapur Gulbarga DC line	-	3.95		2005-06	Commissioned on 17-5-2006
4	220 kV additional SC Line from RTPS to Raichur	-	20		Jun-06	Work under Progress
5	220 kV LILO line to Sindhanur from Lingsugur-II line	-	70		Oct-06	Work under Progress

KERALA

220 KV LINES

1	LILO of Thrissur-Kozhikode 220KV SC to Malapparamba	Nov. 2000	4	-	2005-06	
2	LILO of Kayamkulam-Edamon to Edappon S/S (Bharanikavu-Edappon)	May-01	2x8.5	-	Jun-06	Work in progress
3	DC line from Koonathara-Shornur	May-00	2x4.26	5	2005-06	Work in progress
4	LILO of Veeyapuram-Punnapara (DC)		2x18.62	-	Jun-06	
5	Interconnecting lines to Cochin 400kV PGCIL S/S				Mar-07	Decision regarding the scheme is finalised.
6	Interconnecting lines to existing state grid				Mar-07	Decision regarding the scheme is finalised.
7	LILO at Vadakara from Kozhikode -Kannur line (DC)		2x1	-	Mar-06	Land not acquired
8	Interconnecting lines to Kozhikode 400kV PGCIL S/S				Not fixed	Concurrence from PGCIL awaited.
9	Pothencode - Kattakada(DC)		2x30	-	Mar-07	Tree cutting work awarded for one stretch
10	Athirapally - Kodakara		75		Mar-07	

Sl. No.	Name of the Transmission Line	Date of investment decision by Planning Commission	Length in Circuit Kms.	String-ing completed in c.Kms	Target date of completion	Remarks
TAMIL NADU						
400 KV LINES						
1	Neyveli-Melakkottaiyur 400 KV SC line on DC towers		170			Work yet to be taken up (By turnkey)
2	Almathy-Melakkottaiyur 400 KV SC line on DC towers		20.3			Work yet to be taken up (By turnkey)
230 KV LINES						
1	Karaijadi-Madurai North (SC)		77.56	77.56	2005-06	Line energised on 10-1-06
2	LILO of Korattur - Koyambedu 230 KV line at Alamathy 400 KV S/S		34		2005-06	Work under progress
3	Almathy 400 KV S/S to Avadi 230 KV SS by UG cable near Avadi		12.8		2005-06	Work completed
4	Avadi Railway Crossing to Koladi (common point) for Alamathy		5.22		2005-06	Work under progress
5	Mylapore-Tharamani		11		2005-06	Yet to be taken up.
6a	Elephant Gate-Tondiarpet		5		2005-06	commissioned
7b	230 KV UG Cable Elephant Gate- Mylapore		4		2005-06	Work yet to be taken up.
8	Melakkottaiyur 400KV SS - Kadapperi 230KV SS (SC on DC)		40		2006-07	Work yet to be taken up (By turnkey).
9	Melakkottaiyur 400KV SS-Acharappakkam 230KV SS (SC on DC)		80	-	2005-06	Survey works to be completed
10	LILO of Unjanai- Pugalur at Puthansanthai		35.7	-	Apr-06	Charged on 29.03.2006
11	LILO of 230 KV SP Koil-Tharamani -I at Melakkottaiyur 400 KV SS		20	-	2006-07	Deferred for the present
12	LILO of 230 KV SP Koil-Tharamani-II at Melakkottaiyur 400 KV SS		20	-	2006-07	Profiles approved
13	LILO of 230 KV SP Koil-Tharamani-II at Melakkottaiyur 400 KV SS					
14	DC line from Arasur SS- Palladam SS		40	-	2006-07	Survey works under progress
15	Changing of conductor in Sriperumbudur-Korattur line (Improvement)		20.27	4.5	2005-06	A portion of the work has been completed
16	S.P.Koil-Tharamani DC line on Perambakkam-Tharamani portion		81.5	43	2005-06	Towers erected. Work under progress.
17	Provision of 230 KV lines to LILO Neyveli TS-II to Neveli Zero unit to transfer Cuddalore SS load		28		2005-06	Works under progress
18	LILO of TTPS-SR Pudur 230 KV line at Kudankulam APP site (Start up power)		20.72		May,2006	Line energised on 1.08.06
19	LILO of Myvadi-Pugalur feeder at Palladam SS		100	-	2006-07	Survey work under progress
20	Erection of DC line on DC towers from Alamathy SS to Manali 230 KV SS with Zebra conductor		50	6	Mar-06	
21	230 kV SC line on SC towers from Vinnamangalam S/S to Thiruvalam 230 kV SS with Zebra conductor		88		Mar-06	Profiles approved
22	Erection of 230 kV SC link line on DC towers with Zebra conductor from the existing Deviakkurichi 230 KV SS to 230 kV Pudhanchandai SS		100		2006-07	Tender under finalisation.
23	Replacement of old KUNDAH conductor in 230 kV Singarapet-Salem feeder from location 105 to 300 with Zebra conductor		60			Deferred for the present

Sl. No.	Name of the Transmission Line	Date of investment decision by Planning Commission	Length in Circuit Kms.	String-ing completed in c.Kms	Target date of completion	Remarks
24	LILO of 230 kV Thiruvarur-Karaikkudi line at Karambayam SS		10		2006-07	Yet to be taken up
25	Kayathar-Sankaneri 230/33 Kv SS		178	178	2005-06	Line energised on 29.12.06
26	Pugalur -Chekkanoorani 230 kV line at the prop. Renganathapuram s/s		24	7	2006-07	Works under progress
27	Errrection of 230 kV DC line on DC towers from Myvadi S/S to the prop. Ponnapuram 230 kV S/S		38		2005-06	Energised on 10.07.07
27	Errrection of 230 kV SC link line on DC towers from 230 kV Myvadi S/S 230 kV S/S at Othakalmandapam		58		2005-06	To be taken up
28	Errrection of 230 kV SC line on DC towers from Neyveli Zero Unit to the Propd Ulundurpet 230 kV S/S		25		2006-07	To be taken up
29	Errrection of 230 kV SC line from Villupuram 230 kV S/S to the Propd. Ulundurpet 230 kV S/S		52		2006-07	To be taken up
30	LILO of one of the ckts of the sactioned 230 kV Kayathar 230/33 kV S/S Sankneri DC line at the Tirunelveli 400 kV S/S		80		2006-07	Work under progress
31	Tirunelveli 400 kV S/S-Veeranam (SC)		31	23	2007-08	Work under progress
32	Valathur- Paramkudi		50		2006-07	Work under progress
33	LILO of 230 kV Alagarkoil (North Madurai)-karakkudi 230 kV at the propd. 230 kV Valathur S/S		210		2006-07	Works under progress
34	LILO of 230 KV SP Koil-Tharamani -at Siruseri SS		2	2	2007-08	Line energised on 29.03.07
35	MTPS and MALCO SS to a common point		100		2006-07	Works under progress
36	Gobi to a common point from a new line between Mettur and Gobi		40		2006-07	Tender under finalisation.
37	230 kV DC line- Malumichampatty - Common Point		81.2		2006-07	Works under progress
38	LILO of one of the circuits of the sanctioned 230 kv Kayathar-Sankeri Dc line at the Proposed Udayathur 230/33kv SS		12.4			Line energised on 07.02.07
39	Erection of 230 KV DC line on DC towers from Sriperumbudur SS to Nokia 230 KV SS		11		2007-08	Works under progress
40	LILO of 230 KV S.P. Koil- Tharmani Feeder at Mahindra City		5		2007-08	Works under progress
41	LILO of 230 KV S.P.R.- Koil feeder at Oragadam SS		8		2007-08	Works under progress
42	230 KV DC line from Kayathar to Chekkanoorani		242		2007-08	Work awarded
43	230 KV DC line from Amuthapuram to Chekkanoorani		220		2007-08	Works under progress
44	230 kV SC line on SC towers from Othakkalmandapam to Palladam		48.4		2007-08	Work awarded
45	230 kV SC line on SC towers from Kodikurichi to Amuthapuram		55		2007-08	Works under progress
46	230 kV DC line from Arasur 400 KV SS to Arasur 230 KV SS		13.2		2007-08	Works under progress

Sl. No.	Name of the Transmission Line	Date of investment decision by Planning Commission	Length in Circuit Kms.	String-ing completed in c.Kms	Target date of completion	Remarks
47	LILO of 230 KV SC Pugalur -Chekkanoorani line at Renganathapuram 230KV SS		32		2007-08	Works under progress
48	LILO of 230 KV Mylapore Tondiarpet line at Basin bridge (GMR Vasavi) 230KV SS		2	0.2	2007-08	Works under progress
49	230KV SC line on DC towers from Ponnapuram to Palladam		40		2007-08	Works under progress
50	230KV Sc line on DC towers from Tirunelveli 400 KV SS to Udayathur 230 KV SS		67.6		2007-08	Works under progress
51	230 kv DC line- Common Point - Myvadi Swt. Stn.		17		2006-07	Works under progress
Puducherry 230 KV LINES						
1	LILO of Villianur-Bahour at Ramanathapuram 400 kv S/S		34		Mar-08	Preliminary survey under progress
2	Ramanathapuram-Thondamanatham		16		Dec-08	Preliminary survey under progress

14. दक्षिण क्षेत्र में 400 एवं 220/230 कि वो नये उप केंद्रों के निर्माण कार्य की प्रगति की समीक्षा

REVIEW OF PROGRESS OF WORKS ON NEW 400 KV & 230/220 KV SUBSTATIONS

Sl. No.	Name	Voltage Ratio (KV)	Capacity (MVA)	Date of Investment Decision	Target date for completion	Remarks
---------	------	--------------------	----------------	-----------------------------	----------------------------	---------

ANDHRA PRADESH

400 KV

1	Gajwel	400/220	2x315		Dec-07	Contract awarded. Work yet to commence
2	Ditchipally	400/220	2x315		Mar-07	Works in progress
3	Chittoor	400/220	1x315		2005-06	Works in progress
4	Nellore	400/220	2x315		2005-06	II nd ICT Commissioned on May 06
5	Narasaraopeta	400/220	2x315		Dec-07	Investment approval from APERC is received Bid evaluation under progress
6	Yeddumailaram	400/220	2x315		Oct-08	Investment approval from APERC is awaited. Bid evaluation under progress
7	Malkaram	400/220	2x315		Dec-08	Investment approval from APERC is awaited. Bid evaluation under progress

220 KV

1	Bhimavaram	220/132	2x100		Jan-07	Charged on 2-2-07.
2	Gudivada	220/132	2x100			In service on 20.03.2005 and put into commercial operation on 30.03.2005
3	Vemagiri	220/132	-		2005-06	Commissioned with 4 bays on 06.12.2002. Balance 4 bays also completed
4	Bhongir	220/132	2x100			1 st T/F commissioned on 30.03.2000. 2 nd T/F to be erected.
5	220kV features at existing 132/33 kV S/S Shamshabad	220/132/33	1x100		2005-06	Charged on 21-7-05. Control room works under progress
6	Tekkali	220/132	1x100		Aug-07	Works under progress
7	Kamavarapukota	220/132	2x100		Mar-07	Charged on 28.03.2007
8	Hydabad I A P	220/132	2x20		Jan-07	Charged on 05.03.2007
9	Brandix	220/132	1x100+ 4x50		Aug-07	Works are in progress.
10	Kamareddy		2x100		Nov-07	Site clearing under progress
11	Shadnagar		1x100+1x 31.5		Aug-07	Works are in progress.
12	Kalyandurg		1x100		Dec-06	Works are in progress.
13	Kondamallapalli		1x100		Dec-06	Charged on 21.07.2007

KARNATAKA

400 KV

1	Talaguppa (3rd Transformer)	400/220	1x315		Aug-05	Work under progress
---	-----------------------------	---------	-------	--	--------	---------------------

220 KV

Bangalore Zone

1	Nagarbhavi with link lines	220/66	2x100	Jan. 2002	Sep-07	Fresh tenders to be invited
2	Devanahalli International Airport (Begur)	220/66	2X100	-	Jun-06	2x100 MVA transformer commissioned on 17-07-07

Sl. No.	Name	Voltage Ratio (KV)	Capacity (MVA)	Date of Investment Decision	Target date for completion	Remarks
3	Naganathapura	220/66	2X100	-	Mar-07	LOI issued.
4	Hoskote (Pillaguppa) with link lines	220/66	2x100	-	Mar-07	LOI issued.
5	Tallak	220/66	2x100	-	Jun-07	Work under progresss
6	HAL	220/66	2x100	-	Aug-06	Work under progresss
7	SDSTA & RICD (Nimhans)	220/66	2x150	-	Sep-07	Work under progresss
7	'A' Station compound	220/66	2x150	-	Jun-06	Work under progress
9	Nittur: Est 2x100 MVA 220/110/11 kV station at Nittur	220/110/11	2x110		Mar-06	Work completed. One 100 MVA transformer commd. on 13-9-06 & second transformer on 6-10-06
10	Vrishabhavathi valley	220/66	2x100		Feb-07	LOI issued
11	Yelahaka(Arakavathi L/o)	220/66	2X100		Feb-07	DPR under preparation
12	Replacement 2x100 MVA by 2x150 MVA Tr. 220/66 kV at NRS	220/66	2x100		Mar-07	One 150 MVA transformer commissioned on 18.8.06. Second Tr. Work is taken up.
13	2x100 MVA by 2x100MVA STN with astd lines at HBR Layout		2x100		Mar-08	TAC approved. DPR under preparation
14	2x100MVA 220KV s/s at Dobaspet		2x100		Mar-08	LOI issued
15	2x100 MVA 220/66 KV/s at Hoskote		2x100		Feb-08	Land acquired and fenced.
16	Kanakapura S/S with 220 KV LILO line associated with 66 kV line	220/66	1x100		Feb-07	Work under progresss
17	Bidadi(Addl) Transformer	220/66	1x100		Feb-07	Work awrded
18	East division compound	220/66	2x150		Mar-07	LOI issued
19	Establishing S/S GIS with 220kV DC/UGC line from HAL	220/66			Mar-07	Work under progress
20	HSR Layout	220/66	2x150		March, 07	Works retendered
21	Replacing of 2x100 MVA by 2x150 MVA Transformer at NRS				Feb-06	One 150 MVA transformer commissioned on 18.8.06
22	Subramanyapura replacing of 2x100 MVA by 2x150 MVA Transformer		2x150		March, 07	1x100 MVA transformer commissioned on 28-1-07. 2nd Tr on 05-04-07

Augmentation works

1	Chitradurga: Addl. 1x100 MVA 220/66 kV Tr.	220/66	1x100			Earth excavation under progress
2	Hiriyur: Addl. 1x100 MVA 220/66 kV Tr.	220/66	1x100			Earth excavation under progress
Hassan Zone						
1	Shiralkoppa in Shimoga District	220/110/11	2x100	-	Jan-07	Work under progress
2	Kemar: 2nd transformer	220/110	1x100 (Addl)	-	Dec-06	Transformer test charged on 30.11.06

Sl. No.	Name	Voltage Ratio (KV)	Capacity (MVA)	Date of Investment Decision	Target date for completion	Remarks
3	C.R.Patna (Yachanahalli)	220/66	2x100	-	Mar-07	Work under progress.
4	Bykampady(Arasapadavu)	220/110	2X100	-	Mar-07	TAC approved
5	Puttur (Netlamandur)	220/110	2x100	-	2005-06	Work completed. Ready for commissioning
6	Kadavinakote(HN Pura)	220/66	2x100	-	Sept. 07	Work under progress
Mysore Zone						
1	K.R.Pet	220/66	2X100	-	Aug-07	Work under progress
2	Kushalanagar	220/66	2x100	-	Aug-07	Work under progress
3	Vajamangala	220/66	2x100	-	Dec-07	TAC approved. DPR under preparation
4	Construction of 220 kV TBs at 220/66 kV Station Kadakola for proposed 220 kV DC line from 400/220 kV station Bastipura on total turn key	220/66			Aug.07	Works under progress
Bagalkot Zone						
1	Bidnal	220/110	1x100		Jan-07	Work under progress
2	Sirsi	220/110	1x50		Aug-06	Works completed
3	Haveri(Addl.)	220/110	1x100		Mar-06	Commissioned
4	Narendra	220			2005-06	Work under progress
5	Haveri	220			Dec-05	Work under progress
Gulbarga Zone						
1	Shahapur	220/110	2x100	-	Mar-07	Work yet to be started.
2	Sindhanur	220/110	2x100	-	Oct-06	LOI issued
3	Itagi: 2nd transformer (Addl)	220/66	1x100	-	Mar-06	Commissioned on 11.10 .06
4	Bijapur	220/110			Aug-07	Works under progress
5	Indi	220/110			Aug-07	Works under progress
6	Athani	220/110	2x100	-	Aug-07	Works under progress

KERALA**220 KV****UPGRADATION**

1	Punnapra	220/110	2x100	-	Jun-06	
2	Kundara (REC)	220/110	(2x100+3x12.5)	-	2005-06	Work under progress
3	Kalamassery (Enhancement of transformer capacities)	220/110	(2x100+2x120) to 4x200	-		1st, 2nd & 3rd Transformers : already commissioned. 4th Transformer : Work not started.
4	Edappon (REC)	220/110	2x100	-	Jun-06	Work under progress
5	Shoranur	220/110	2x100	-		Works completed
6	Thaliparamba	220/110	2x100	-	2005-06	Work under progress
7	Vadakara	220/110	2x100	-	Mar-06	
8	Kattakkada	220/110	2x100	-	Jun-06	
9	Nallalam(Existing)	220/110	(2x100+1x60) to (2x100+2x60)			Works completed
10	Malaparamba	220/110	2x100 + 2x12.5		2005-06	Work under progress
11	Pothoncode (Bay extn.)	220/110	4 bays			Work under progress
12	Muvattupuzha				March 07	Decision reg the scheme is finalisd
13	Ext. of Edamon substation				March 07	Work not started

Sl. No.	Name	Voltage Ratio (KV)	Capacity (MVA)	Date of Investment Decision	Target date for completion	Remarks
---------	------	--------------------	----------------	-----------------------------	----------------------------	---------

**TAMIL NADU
400 KV**

1	Alamathy	400/230-110	1x200	-	March '06	Commissioned on 20-8-06
2	Melakkottaiyur	400/230	2x315 (6x105)		2007-08	Work executed by PGCIL
3	Pugalur	400/230			2007-08	Work executed by PGCIL
4	Arasur	400/230			2007-08	Work executed by PGCIL
5	Tiruneveli (Abishekapatty)	400/230			2007-08	Work executed by PGCIL
6	Suguvarchatram	400/230	2x315 2x100		2007-08	Work under progress

230 KV

1	Pudanchandai	230/110	2x100	-	March, 06	Commissioned on 28.04.2006
2	Palladam	230/110	2x100		2007-08	Work under progress
3	Tharamani (Addl.)	230/110	1x100		2006-07	Work under progress
4	Gummidipoondi (Addl.)	230/110	1x100		2006-07	Work to be taken up
5	Manali (Addl.)	230/110	1x100		Mar-06	Work to be taken up
6	Sankaneri (Addl.)	230/110	1x100		Mar-06	transformer Commissioned on 17.07.07
7	Thudiyalur (Addl.)	230/110	1x100		2006-07	Work to be taken up
8	Karambayam	230/110	2x100		2006-07	Work to be taken up
9	Siruseri	230/110	2x100		2006-07	Commissioned on 29.03.07
10	Valathur	230/110	3x100		2006-07	Work under progress
11	Karamadai	230/110	2x100		2006-07	Work to be taken up
12	Renganathapuram	230/110	2x50		2006-07	Work under progress
13	Udayathur	230/33	2x50		2006-07	Commissioned on 09.02.07
14	Basin Bridge(GMR Vasavi)	230/110	4x100		2007-08	Work under progress
15	Ulundurpet	230/110	2x100		2008-09	Work to be taken up
16	Oragadam	230/110			2007-08	Work under progress
17	Chithode	230/110	1x100		2006-07	Work to be taken up
18	Ponnapuram	230/110	2x100		2007-08	Commissioned on 10.06.07
19	Sriperumbudur Sipcot	230/110	2x100		2006-07	Commissioned on 10.06.07
20	Mahindra city (Veerapuram)	230/110	2x100		2007-08	Work under progress
21	KITS	230/110	2x100		2007-08	Work under progress
22	NOKIA	230/110	2x100		2007-08	Work under progress
23	Amuthapuram	230/110	2x50		2007-08	Work to be taken up
19	Sriperumbudur Sipcot	230/110	2x100		2006-07	Commissioned on 10.06.07

Puducherry

230 KV

1	Thondamanatham	230/110	2x100		Dec-08	Preliminary survey under progress
---	----------------	---------	-------	--	--------	-----------------------------------

15. दक्षिण क्षेत्र में पावर ग्रिड की केंद्रीय पारेषण योजनाओं के निर्माण कार्य की प्रगति की समीक्षा
REVIEW OF PROGRESS OF WORKS OF POWERGRID EXECUTED CENTRAL TRANSMISSION SCHEMES

Sl. No.	Name of the Transmission Line	Date of investment decision by Planning Commission	Length in Circuit Kms.	Stringing completed in circuit Kms.	Target date of completion	Remarks in respect of target dates as per OCC
---------	-------------------------------	--	------------------------	-------------------------------------	---------------------------	---

A GENERATION EVACUATION SCHEME

1 Kaiga APP Stage-II Additional Transmission System

1.1	Narendra-Davanagere (D/C)	Mar-05	300		Nov-07	Awarded on 30.11.2005. Stringing commenced.
1.2	Nelamangala-Mysore (DC)	Aug. 2003	266	266	Mar-06	Commercial operation w.e.f 1-5-2006
1.3	Mysore-Kozhikode (D/C)	Mar-05	384		Dec-07	Awarded in December 2005
1.4	LILO (1xD/C) of 400 KV Kolar-Sriperumbudur line at Melakottaiyur	-Do-	36		Dec-07	Awarded in May 2006. Work under progress
1.5	New 400/220 KV, 2x315 MVA sub-stations at Mysore	-Do-			Apr-06	Substation along with ICT1 commissioned on 26-4-2006. ICT2 Commissioned on 30-4-2006. Under commercial operation w.e.f. 1-05-06
1.6	Ext. of Mysore substation				Dec-07	Award placed in January 06. Work in progress
1.7	New 400/220 KV, 2x315 MVA sub-stations at Kozhikode	-Do-			Dec-07	Civil work under progress
1.8	New 400/220 KV, 2x315 MVA sub-stations at Melakottaiyur	-Do-			Dec., 07	Civil work under progress
1.90	Second 400/220 KV, 315 MVA transformer at Hiriyyur	-Do-			Dec., 07	Civil work under progress
1.10	Sub-station extension for line bays at Narendra	-Do-			Dec-07	Award placed in Dec., 05. Work in progress
1.11	Sub-station extension for line bays at Davanagere(KPTCL)	-Do-			Dec-07	Award placed in Dec., 05. Civil work in progress
1.12	Sub-station extension for line bays at Nelamangala(400 kV)	-Do-			Apr-06	Line bays commissioned on 26-4-2006.
1.13	Bay Extn. Of Mysore S/S(400 kV)				Dec-07	Engineering work in progress
1.14	Bay Extn. Of Hiriyyur S/S(400 kV)				Feb-08	Work under progress

2 Neyveli TS-II Expansion (2x250 MW) Transmission System

2.1	Neyveli TS-II Expansion - Neyveli TS-II (2xS/C)	Jan-05	6		Dec-07	Work under progress
2.2	Neyveli TS-II Expansion-Pugalur (D/C)	-Do-	366		Dec-07	Award placed. Work under progress

Sl. No.	Name of the Transmission Line	Date of investment decision by Planning Commission	Length in Circuit Kms.	Stringing completed in circuit Kms.	Target date of completion	Remarks in respect of target dates as per OCC
2.3	Pugalur-Madurai (D/C)	-Do-	246		Dec-07	Tower erection work commenced from Oct- 06. Work under progress
2.4	Udumalpet-Arasur (D/C)	-Do-	132		Dec-07	Award placed. Work under progress
2.5	LILO (1xD/C) of Neyveli-Sriperumbudur 400 KV S/C line at Pondicherry	-Do-	30		Dec-07	Award placed. Work under progress
2.6	LILO (1xD/C) of Ramagundam-Khammam 400 KV S/C line at Warangal	-Do-	36		Dec-07	Award placed.
2.7	New 400/220 KV, 2x315 MVA sub-station at Pugalur	-Do-			Dec-07	Award placed in February 06. Work under progress
2.8	New 400/220 KV, 2x315 MVA sub-station at Arasur	-Do-			Dec-07	Award placed in March 06. Work under progress
2.9	New 400/220 KV, 2x315 MVA sub-station at Pondicherry	-Do-			Dec-07	Award placed in March 06. Work under progress.
2.10	New 400/220 KV, 2x315 MVA sub-station at Warangal	-Do-			Dec-07	Award placed in March 06. Engg. in progress
2.11	Sub-station Extension for line bays at Madurai	-Do-			Dec-07	Award placed in February 06. Work under progress
2.12	Sub-station Extension for line bays at Neyveli TS-II	-Do-			Dec-07	
2.13	Sub-station Extension for line bays at Udumalpet	-Do-			Dec-07	Award placed in March 06. Work under progress.

3 Kudankulam APP (2000 MW) Transmission System

3.1	KAPP-Tirunelveli 400 KV Quad D/C line-1	25.05.2005	158.39		May-07	Work in progress
3.2	KAPP-Tirunelveli 400 KV Quad D/C line-2	25.05.2005	144		Dec-07	Work in progress
3.3	LILO of both circuits of Madurai-Thiruvananthapuram (D/C) at Tirunelveli (2xD/C LILO lines)	25.05.2005	211.5		May-07	Award placed in December 2005. Work in progress
3.4	Tirunelveli-Udumalpet (D/C)	25.05.2005	530.86		Dec-07	Tower erection commenced from Oct-06. work under progress
3.5	Tirunelveli-Edamon (D/C)	25.05.2005	161.74		Nov-08	Work awarded in March 06. Work under progress.
3.6	Edamon-Moovattupuzha(East Cochin) Quad DC	25.05.2005	295.07		Nov-08	Under tendering process
3.7	Moovattupuzha(East Cochin) - North Trichur, Quad DC line	25.05.2005	154.96		Nov-08	Under tendering process
3.8	New 400/220 KV, 2x315 MVA sub-station at Tirunelveli	-Do-			May-07	Award placed in Nov 05. Work in progress
3.9	New 400/220 KV, 2x315 MVA sub-station at Cochin (Muvattapuzha)	-Do-			Nov-08	Awarded. Work under progress
3.10	3rd 400/220 KV, 1x315 MVA transformer at Thiruvananthapuram S/S	-Do-			Nov-08	Awarded. Work under progress
3.11	Ext. o f 400/220 kV North Trichur(PG) subsation				Nov-08	Work under progress
3.12	Addl. 400/220 KV, 1x315 MVA transformer at Udumalpet S/S	-Do-			Dec-07	Awarded. Work under progress

Sl. No.	Name of the Transmission Line	Date of investment decision by Planning Commission	Length in Circuit Kms.	Stringing completed in circuit Kms.	Target date of completion	Remarks in respect of target dates as per OCC
---------	-------------------------------	--	------------------------	-------------------------------------	---------------------------	---

B REGIONAL SYSTEM STRENGTHENING SCHEME

1 SR Strengthening Scheme (III&IV)

1.1	Raichur-Gooty 400 kV (D/C)		294		Apr - 07	Synchronised to grid on 30-4-07. Commercial Operation from 1-5-07
1.2	LILO of both circuits of 400 KV Nellore-SPBudur D/C line at Alamathi Nellore-Almathi-I&II, Almathi-Sriperambdur I&II					Commissioned on 24-5-006 and on 25.5.06
1.3	Nelamangala-Somanahalli (D/C)	Oct'04	84		Sept., 2007	Line commissioned on 31-12-2006
1.4	2nd 315 MVA Transformer at 400/220 KV sub-station of Cuddapah				July-07	Commissioned on 30.07.2007
1.5	2nd 315 MVA Transformer at 400/220 KV sub-station of Khammam				June-07	
1.6	2nd 315 MVA Transformer at 400/220 KV sub-station of Gooty				Aug 2007	Testing under progress. Commissioned anticipated by 30.08.2007.
1.7	Ext. 400 kV substation at Raichur				April 07	Civil work in progress.
1.8	Ext. of 400 kv substation at Nelamangala				Jul-07	Commissioned in Dec-2006
1.9	2nd 315 MVA Transformer at 400/220 KV sub-station of Vizag				June-07	
1.10	1x167 MVA Transformer at 400/220 KV sub-station of Munirabad				June-07	
1.11	2nd 315 MVA Transformer at 400/220 KV sub-station of Kolar				June-07	27 months from date of first LOA.
1.12	Extn. Of Somanahalli S/S				Jul-07	Commissioned in Dec-06
1.13	Provision of 80 MVAR Bus Reactor at Nellore S/S				June-07	Commissioned on 06.06.2007.
1.14	Extn. Of Almathi S/S(400 kV)				Feb-07	Commissioned in May-2006.

2 Regional System Strengthening Scheme V

2.1	LILO of one circuit of Madurai-Trichy (D/C) at Karaikudi	31.05.2005	120		Jul-09	Award placed in Oct-06
2.2	LILO of one circuit of Talaguppa-Nelamangala (D/C) at Hassan	-Do-	160		Jul-09	Awarded. Work under progress
2.3	New 400/220 KV, 2x315 MVA sub-station at Hassan	-Do-			May-08	Award under progress.
2.4	New 400/220 kV, 2x315 MVA S/S at Karaikudi				May-08	Award under progress.
2.5	Ext. of 400 kv substation at Gooty 1x315 MVA				Jun-07	Commissioned in April 2007
2.6	Ext. of 400 kv substation at Nellore 1x80 MVA				Jun-07	Commissioned on 6.6.07

Sl. No.	Name of the Transmission Line	Date of investment decision by Planning Commission	Length in Circuit Kms.	Stringing completed in circuit Kms.	Target date of completion	Remarks in respect of target dates as per OCC
2.7	Ext. of 400 kv substation at Munirabad 1x315 MVA				Jun-07	Civil work /erection in progress.
2.8	Ext. of 400 kv substation at Kolar 3x167MVA				Jun-07	Civil work /erection in progress.
2.9	Ext. of 400 kv substation at Somanahalli				Aug-07	Civil work /erection in progress.
2.10	Ext. of 400 kv substation at Gajuwaka 1x315 MVA				Jun-07	Engg & civil works under progress
2.11	Ext. of 400 kv substation at Khammam 1x315 MVA				Jun-07	Engg & civil works under progress

3 System Strengthening Scheme VI

3.1	Second 400/220 KV, 315 MVA transformer at Vijayawada				Dec-07	Work under progress
3.2	LILO of one ckt of Vijayawada-Gajuwaka 400 kV D/C line at Vemagiri				Dec-07	Survey under progress

4 System Strengthening Scheme VII

4.1	Karaikudi substation 2x315 MVA				July- 09	Work under progress
4.2	Hassan substation 2x315 MVA				July- 09	Work under progress
5	Upgradation of transfer capacity of Talcher-Kolar HVDC Bipole				April 08	Award placed in April 06. Engg. in progress

आंध्र प्रदेश ANDHRA PRADESH

अधिकतम एवं न्यूनतम दैनिक मांग मे वा में

DAILY MAXIMUM AND MINIMUM DEMANDS IN MEGA WATTS

Date	Maximum Demand (Unrestricted) at 50 Hz	Maximum Demand (Restricted) (Actuals)	Minimum Demand (Actuals)	Min/Max (Restricted)	Min/Max (Unrestricted)	Load Factor
	1	2	3	4=3/2	5=3/1	6
1-Jul-07	6829	6505	4828	0.74	0.71	86.82
2-Jul-07	7288	6819	5272	0.77	0.72	89.53
3-Jul-07	7347	6932	5220	0.75	0.71	92.34
4-Jul-07	7448	7045	5468	0.78	0.73	91.46
5-Jul-07	7394	7040	5548	0.79	0.75	92.34
6-Jul-07	7654	7130	5780	0.80	0.75	92.23
7-Jul-07	7691	7277	5725	0.79	0.74	88.97
8-Jul-07	7592	7168	5077	0.71	0.67	88.59
9-Jul-07	7666	7129	5398	0.76	0.70	92.21
10-Jul-07	7914	7336	5256	0.72	0.66	91.62
11-Jul-07	7969	7358	5482	0.75	0.69	92.73
12-Jul-07	7884	7320	5838	0.80	0.74	93.32
13-Jul-07	7875	7384	5906	0.80	0.75	92.51
14-Jul-07	7843	7433	5657	0.76	0.72	90.38
15-Jul-07	7474	7072	5329	0.75	0.71	91.01
16-Jul-07	7657	7204	5649	0.79	0.74	91.85
17-Jul-07	7554	7181	5697	0.79	0.75	93.83
18-Jul-07	8130	7542	6131	0.81	0.75	91.57
19-Jul-07	8435	7702	6437	0.84	0.76	91.80
20-Jul-07	8151	7517	6354	0.85	0.78	94.55
21-Jul-07	8282	7715	5885	0.76	0.71	90.40
22-Jul-07	7968	7505	5690	0.76	0.71	90.60
23-Jul-07	7902	7295	5857	0.80	0.74	93.32
24-Jul-07	8036	7489	5822	0.78	0.72	92.42
25-Jul-07	8326	7637	6242	0.82	0.75	93.47
26-Jul-07	8466	7665	5844	0.78	0.71	92.93
27-Jul-07	8634	7866	5992	0.76	0.69	91.42
28-Jul-07	8131	7514	5865	0.78	0.72	92.73
29-Jul-07	7909	7443	5740	0.77	0.73	91.27
30-Jul-07	8139	7536	5625	0.75	0.69	92.03
31-Jul-07	8207	7542	5972	0.79	0.73	92.76
Minimum			4828	0.71	0.66	86.82
Maximum	8634	7866		0.85	0.78	94.55
Average				0.78	0.72	91.68

Demands are Ex-bus

ANNEXURE - I B

कर्नाटक KARNATAKA

अधिकतम एवं न्यूनतम दैनिक मांग मे वा में

DAILY MAXIMUM AND MINIMUM DEMANDS IN MEGA WATTS

Date	Maximum Demand (Unrestricted) at 50 Hz	Maximum Demand (Restricted) (Actuals)	Minimum Demand (Actuals)	Min/Max (Restricted)	Min/Max (Unrestricted)	Load Factor
	1	2	3	4=3/2	5=3/1	6
1-Jul-07	3452	3436	1956	0.57	0.57	77.86
2-Jul-07	4100	4003	2178	0.62	0.60	80.09
3-Jul-07	4195	4099	2470	0.60	0.59	82.17
4-Jul-07	4315	4170	2531	0.61	0.59	86.44
5-Jul-07	4405	4167	2634	0.63	0.60	86.91
6-Jul-07	4827	4354	2939	0.68	0.61	85.79
7-Jul-07	3855	3911	2700	0.69	0.70	91.03
8-Jul-07	3948	3899	2357	0.60	0.60	87.16
9-Jul-07	4623	4475	2509	0.56	0.54	84.17
10-Jul-07	4730	4386	2922	0.67	0.62	90.61
11-Jul-07	4701	4566	3075	0.67	0.65	89.60
12-Jul-07	4412	4377	3024	0.70	0.69	92.10
13-Jul-07	4709	4376	3050	0.70	0.65	92.10
14-Jul-07	4296	4265	3011	0.71	0.70	91.01
15-Jul-07	4067	4073	2612	0.64	0.64	89.06
16-Jul-07	4452	4419	2847	0.64	0.64	91.30
17-Jul-07	4659	4591	2813	0.61	0.60	88.28
18-Jul-07	4867	4754	3215	0.68	0.66	90.02
19-Jul-07	4974	4849	3249	0.67	0.65	90.71
20-Jul-07	4869	4781	3084	0.65	0.63	88.39
21-Jul-07	4456	4374	3058	0.70	0.69	92.20
22-Jul-07	4185	4164	2955	0.67	0.67	90.39
23-Jul-07	4830	4688	2806	0.60	0.58	87.62
24-Jul-07	4862	4697	3268	0.70	0.67	89.82
25-Jul-07	4726	4561	2774	0.61	0.59	89.24
26-Jul-07	4876	4739	3115	0.66	0.64	88.14
27-Jul-07	4507	4442	3136	0.71	0.70	93.83
28-Jul-07	4415	4359	3093	0.71	0.70	91.91
29-Jul-07	4019	3992	2602	0.65	0.65	90.44
30-Jul-07	4301	4319	2635	0.61	0.61	87.97
31-Jul-07	4342	4300	2763	0.64	0.64	96.02
Minimum			1956	0.56	0.54	77.86
Maximum	4974	4849		0.71	0.70	96.02
Average				0.65	0.63	88.79

ANNEXURE - IC

केरल KERALA

अधिकतम एवं न्यूनतम दैनिक मांग मे वा में

DAILY MAXIMUM AND MINIMUM DEMANDS IN MEGA WATTS

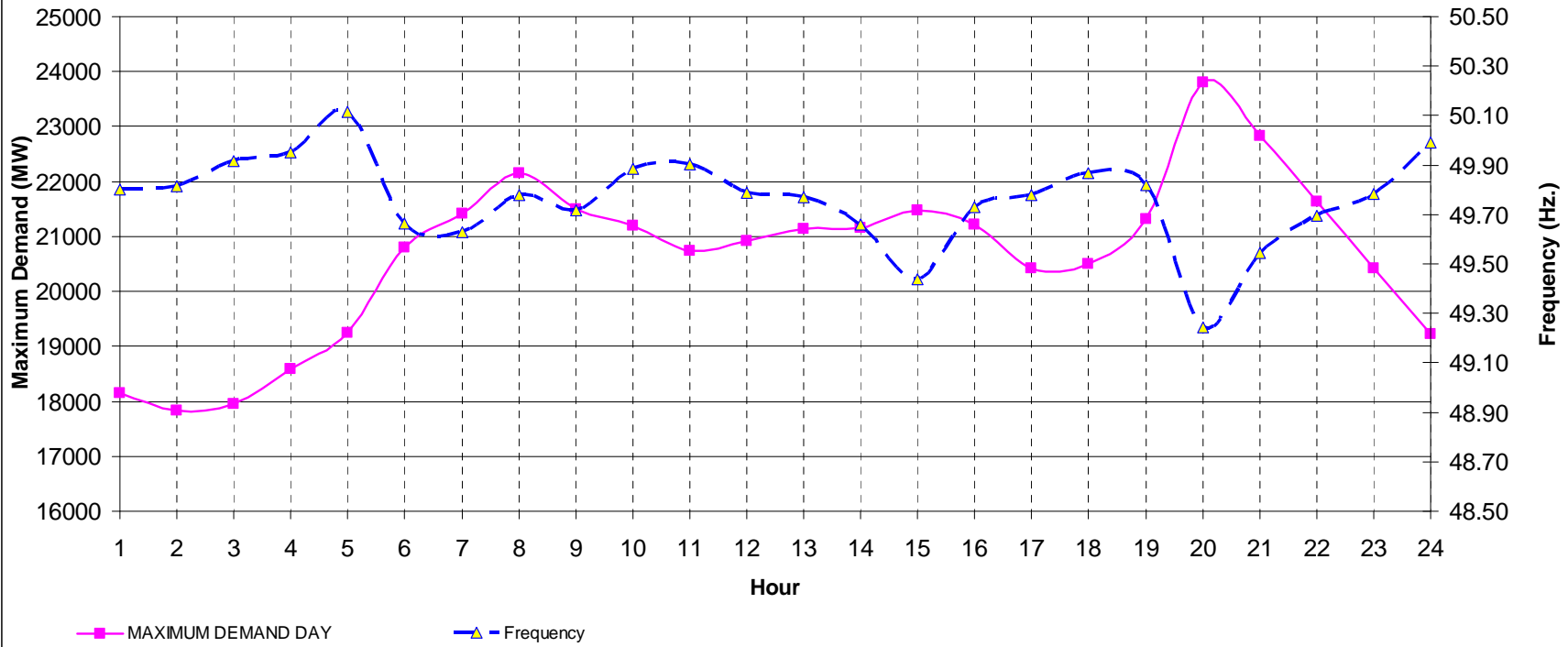
Date	Maximum Demand (Unrestricted) at 50 Hz	Maximum Demand (Restricted) (Actuals)	Minimum Demand (Actuals)	Min/Max (Restricted)	Min/Max (Unrestricted)	Load Factor
	1	2	3	4=3/2	5=3/1	6
1-Jul-07	2356	2295	1005	0.44	0.43	61.08
2-Jul-07	2446	2385	1092	0.46	0.45	63.85
3-Jul-07	2473	2411	1197	0.50	0.48	66.60
4-Jul-07	2510	2448	1129	0.46	0.45	64.65
5-Jul-07	2480	2419	1184	0.49	0.48	67.04
6-Jul-07	2476	2414	1236	0.51	0.50	67.23
7-Jul-07	2463	2401	1223	0.51	0.50	67.31
8-Jul-07	2397	2335	1194	0.51	0.50	64.32
9-Jul-07	2416	2354	1216	0.52	0.49	67.54
10-Jul-07	2477	2415	1192	0.49	0.48	66.47
11-Jul-07	2432	2370	1171	0.49	0.48	67.75
12-Jul-07	2579	2517	1228	0.49	0.48	66.24
13-Jul-07	2620	2558	1259	0.49	0.48	65.91
14-Jul-07	2501	2440	1236	0.51	0.50	68.42
15-Jul-07	2418	2356	1244	0.53	0.51	65.79
16-Jul-07	2332	2270	1157	0.51	0.50	68.93
17-Jul-07	2400	2339	1051	0.45	0.44	64.18
18-Jul-07	2552	2491	1053	0.42	0.41	62.22
19-Jul-07	2446	2384	1219	0.51	0.50	68.58
20-Jul-07	2515	2453	1222	0.50	0.49	67.30
21-Jul-07	2525	2463	1141	0.46	0.45	64.82
22-Jul-07	2368	2306	1113	0.48	0.47	64.04
23-Jul-07	2443	2382	1124	0.47	0.46	66.65
24-Jul-07	2288	2227	1232	0.55	0.54	72.79
25-Jul-07	2389	2327	1187	0.51	0.50	69.44
26-Jul-07	2395	2334	1198	0.51	0.50	70.19
27-Jul-07	2489	2428	1151	0.47	0.46	68.00
28-Jul-07	2606	2544	1210	0.48	0.46	66.05
29-Jul-07	2516	2454	1249	0.51	0.50	63.17
30-Jul-07	2476	2415	1240	0.51	0.50	68.09
31-Jul-07	2332	2271	1271	0.56	0.55	72.77
Minimum			1005	0.42	0.41	61.08
Maximum	2620	2558		0.56	0.55	72.79
Average				0.49	0.48	66.69

अधिकतम एवं न्यूनतम दैनिक मांग मे वा में

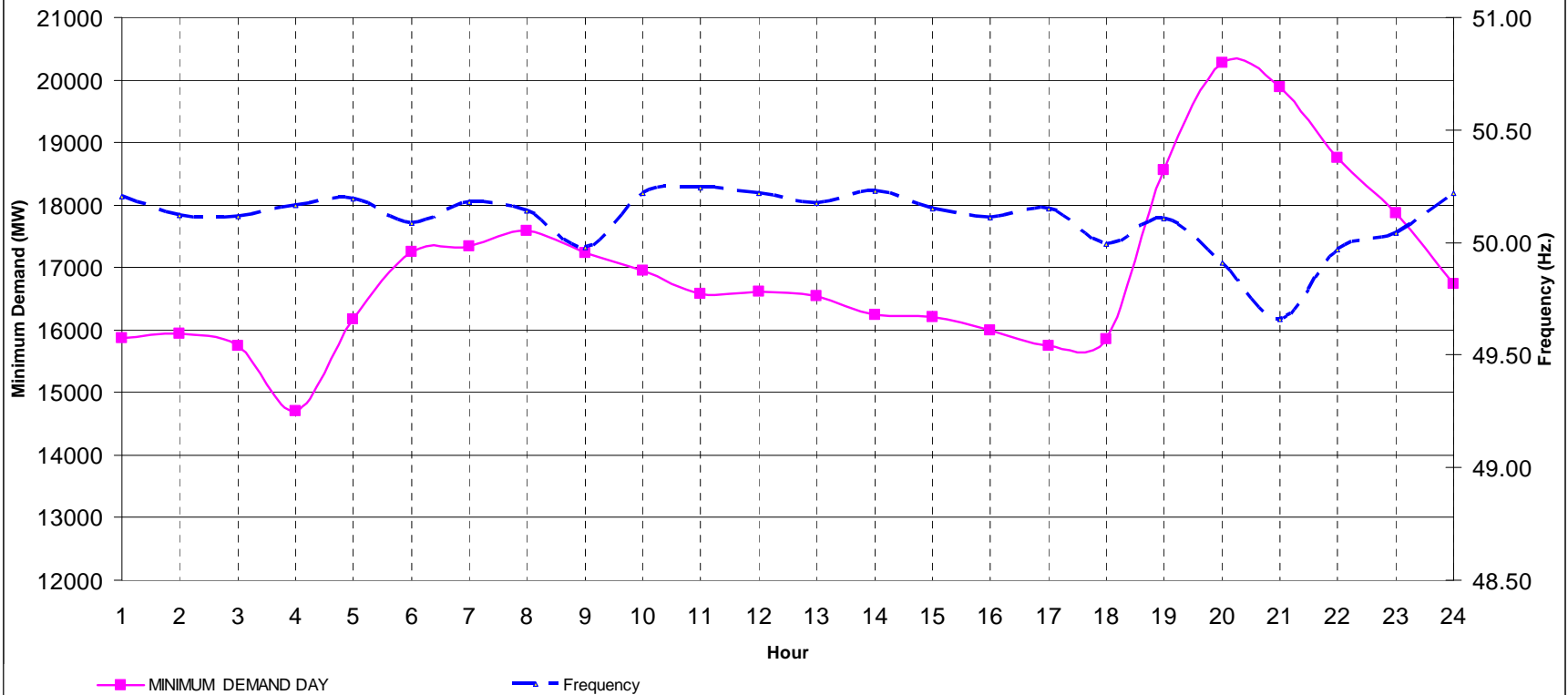
DAILY MAXIMUM AND MINIMUM DEMANDS IN MEGA WATTS

Date	Maximum Demand (Unrestricted) at 50 Hz	Maximum Demand (Restricted) (Actuals)	Minimum Demand (Actuals)	Min/Max (Restricted)	Min/Max (Unrestricted)	Load Factor
	1	2	3	4=3/2	5=3/1	6
1-Jul-07	7553	7468	6463	0.88	0.86	84.72
2-Jul-07	8688	8451	6058	0.73	0.70	82.58
3-Jul-07	8773	8521	6681	0.79	0.76	79.95
4-Jul-07	8596	8458	6616	0.79	0.77	78.36
5-Jul-07	8639	8377	6725	0.83	0.80	79.68
6-Jul-07	8810	8614	6905	0.81	0.78	77.34
7-Jul-07	8537	8477	6700	0.80	0.78	77.05
8-Jul-07	7742	7758	6867	0.90	0.89	81.33
9-Jul-07	8548	8249	6560	0.81	0.77	82.43
10-Jul-07	8440	8123	6790	0.85	0.80	81.90
11-Jul-07	8335	8250	6718	0.82	0.81	78.63
12-Jul-07	8261	8209	6283	0.78	0.76	75.24
13-Jul-07	8786	8748	6393	0.74	0.73	72.73
14-Jul-07	8382	8359	6535	0.79	0.78	76.48
15-Jul-07	7593	7647	6484	0.81	0.81	78.56
16-Jul-07	8553	8323	6115	0.07	0.71	74.65
17-Jul-07	8405	8323	6416	0.78	0.76	74.64
18-Jul-07	9064	8820	6552	0.75	0.72	74.90
19-Jul-07	8277	8193	6617	0.82	0.80	83.34
20-Jul-07	8309	8115	6187	0.77	0.74	77.47
21-Jul-07	8367	8097	6263	0.78	0.75	73.77
22-Jul-07	7333	7328	6043	0.84	0.82	76.23
23-Jul-07	8244	8029	5919	0.75	0.72	83.26
24-Jul-07	8218	7903	6375	0.82	0.78	82.44
25-Jul-07	8107	7800	6066	0.80	0.76	81.19
26-Jul-07	8417	8143	6132	0.76	0.73	77.83
27-Jul-07	8367	8226	6080	0.75	0.73	74.53
28-Jul-07	8561	8437	5964	0.72	0.70	70.71
29-Jul-07	7276	7214	5791	0.81	0.80	78.51
30-Jul-07	8293	8173	5337	0.66	0.64	75.57
31-Jul-07	7913	7854	5806	0.75	0.73	75.32
Minimum			5337	0.07	0.64	70.71
Maximum	9064	8820		0.90	0.89	84.72
Average				0.77	0.76	78.11

LOAD AND FREQUENCY CURVES OF SOUTHERN REGION ON MAXIMUM DEMAND DAY
Maximum Demand: 23806 MW on 18.07.2007



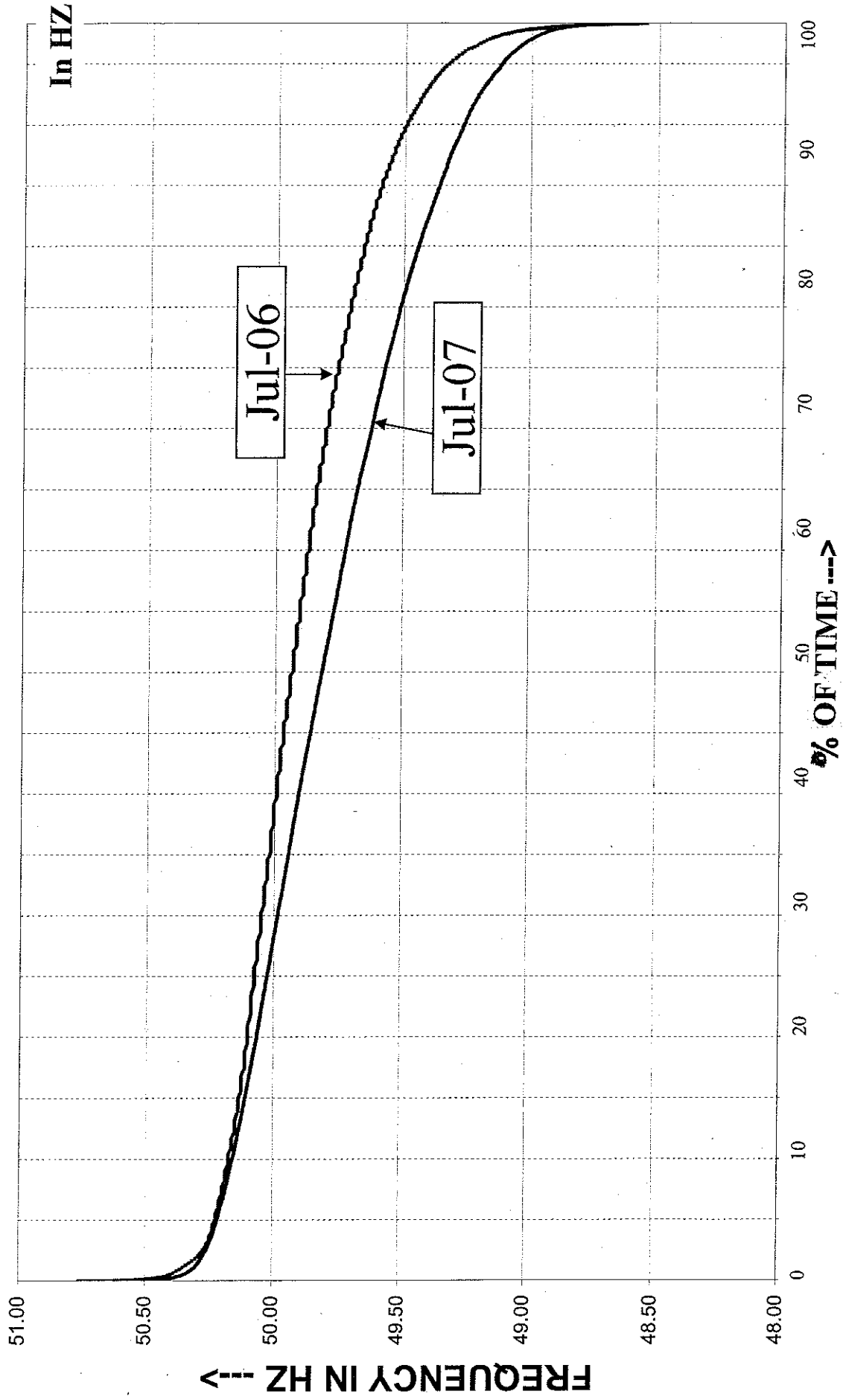
LOAD AND FREQUENCY CURVES OF SOUTHERN REGION ON MINIMUM DEMAND DAY
Minimum Demand: 14703 MW on 01.07.2007



**HOURLY VALUES IN MW FOR SOUTHERN REGION
ON MAXIMUM DEMAND DAY AND MINIMUM DEMAND DAY**

HOURS	MAXIMUM DEMAND DAY	MINIMUM DEMAND DAY
	18-Jul-07	1-Jul-07
1	18153	15873
2	17840	15940
3	17949	15757
4	18595	14703
5	19254	16175
6	20806	17260
7	21414	17343
8	22153	17584
9	21502	17235
10	21189	16957
11	20734	16571
12	20920	16613
13	21140	16544
14	21158	16244
15	21479	16212
16	21208	15989
17	20425	15752
18	20499	15856
19	21307	18558
20	23806	20279
21	22835	19891
22	21629	18762
23	20418	17877
24	19229	16739
MAXIMUM	23806	20279
MINIMUM	17840	14703

FREQUENCY DURATION CURVE JULY-07 & JULY-06



INTRA REGIONAL ENERGY EXCHANGES IN MU USING ISTS

From	July-07								Cum. from April 2007 to Jul-07							
	TO															
	ANDHRA PRADESH		KARNATAKA		KERALA		TAMIL NADU		ANDHRA PRADESH		KARNATAKA		KERALA		TAMIL NADU	
	At Seller Periphery	At Buyer Periphery	At Seller Periphery	At Buyer Periphery	At Seller Periphery	At Buyer Periphery	At Seller Periphery	At Buyer Periphery	At Seller Periphery	At Buyer Periphery	At Seller Periphery	At Buyer Periphery	At Seller Periphery	At Buyer Periphery	At Seller Periphery	At Buyer Periphery
ANDHRA PRADESH			0.000	0.000	0.000	0.000	0.000	0.000			0.000	0.000	0.000	0.000	0.000	0.000
KARNATAKA	0.000	0.000			0.000	0.000	0.000	0.000	0.000	0.000			0.000	0.000	0.000	0.000
KERALA	0.000	0.000	0.000	0.000			0.000	0.000	32.188	30.885	0.000	0.000			248.306	238.757
TAMIL NADU	0.000	0.000	0.000	0.000	0.000	0.000			1.050	1.011	0.000	0.000	0.000	0.000		
IPPs/CPPs	0.000	0.000	0.000	0.000	0.000	0.000	0.000	0.000	116.015	111.568	0.000	0.000	0.000	0.000	0.000	0.000
TOTAL SOUTHERN REGION	0.000	0.000	0.000	0.000	0.000	0.000	0.000	0.000	149.253	143.464	0.000	0.000	0.000	0.000	248.306	238.757

KERALA	TAMIL NADU	Mutual(TN's share from RGCCPP, Kym)	July-07		Cum. from April 2007	
			At Seller Periphery	At Buyer Periphery	At Seller Periphery	At Buyer Periphery
			74.503	71.983	395.808	380.349

WHEELED ENERGY THROUGH SR (Scheduled Energy)

FROM	July-07								Cum. from April 2007					
	TO													
	ER		NR		WR		ER		NR		WR			
	Seller Periphery	Buyer Periphery	Seller Periphery	Buyer Periphery	Seller Periphery	Buyer Periphery	Seller Periphery	Buyer Periphery	Seller Periphery	Buyer Periphery	Seller Periphery	Buyer Periphery	Seller Periphery	Buyer Periphery
ER/NER			0.000	0.000	0.000	0.000			0.000	0.000	0.000	0.000		
NR	0	0			0	0	0	0						
WR	0	0	0	0			0	0	0.000	0.000				

ACTUAL INTER REGIONAL ENERGY EXCHANGES IN MU

FROM	July-07				Cum. from April 2007				July-07				Cum. from April 2007			
	ER END		SR		ER END		SR		WR END		SR		WR END		SR	
	TO								TO							
	ER	SR	ER	SR	FROM	WR	SR	WR	SR	WR	SR	WR	SR	WR	SR	
ER		3.425			444.359	WR		39.971				268.464				
SR	274.097			496.269		SR	86.659				266.196					

ER end = At Gazuwaka East Bus and Talcher Interconnecting Bus

WR end = At Chandrapur East Bus

A. अनुसूचित द्विपक्षीय विनिमय **SCHEDULED BILATERAL EXCHANGES IN MU**

From Utility	To Beneficiary	Trader	Link	Energy in MU	
				At Seller Periphery	At Buyer Periphery

INTRA REGIONAL EXCHANGES

KER	TN	Mutual		74.503	71.983
KER	TN	NVVN			
VSL(KAR)	AP	TATA		0.000	0.000
UGARSW(KAR)	AP	TATA		0.000	0.000

INTER REGIONAL EXCHANGES**EXPORTS**

				At Seller Periphery	At Interegional Periphery
APPCC	PSEB	LANCO	ER	4.713	4.540
Total(AP) ER				4.713	4.540
APPCC	MSEDCL	LANCO	WR	2.000	1.923
APPCC	MSETCL(TATA)	LANCO	WR	2.350	2.259
Total(AP) WR				4.350	4.182
Total AP				9.063	8.722
KPCL(KAR)	PSEB	LANCO	WR	0.292	0.281
Total(KAR) WR				0.292	0.281
BESCOM(KAR)	PSEB	TATA	ER	60.321	58.448
Total(KAR) ER				60.321	58.448
Total(KAR)				60.613	58.729
KER				Nil	Nil
TN	HPGCL	NVVNL	ER	30.180	29.182
TN	PSEB	NVVNL	ER	87.350	84.456
Total(TN)ER				117.530	113.638
Total(TN)				117.530	113.638

IPPs/Captives

NAVABH(AP)	MSEDCL	RETL	WR	1.964	1.905
NCSUG(AP)	UPPCL	PTC	WR	2.585	2.496
NAVABH(AP)	HPGCL	RETL	WR	7.859	7.609
NAVABH(AP)	CESC(WB)	RETL	ER	7.563	7.311
Total AP IPPs/Captives				19.971	19.321
JSW(KAR)	PSEB	JSWPTC	WR	63.859	61.830
JSW(KAR)	HPGCL	JSWPTC	WR	3.990	3.872
GEL(KAR)	UPPCL	NPCL	WR	0.821	0.791
SRSL(KAR)	PSEB	TATA	WR	1.903	1.837
GSML(KAR)	PSEB	TATA	WR	5.279	5.083
SRSL(KAR)	PSEB	TATA	ER	1.258	1.220
GSML(KAR)	PSEB	TATA	ER	0.482	0.465
Total KAR IPPs/Captives				77.592	75.098

From Utility	To Beneficiary	Trader	Link	Energy in MU	
				At Sellers Periphery	At Interegional Periphery
				Upto 22nd	Upto 22nd
Total SR IPPs/Captives				97.563	94.419
TOTAL SR VIA ER				191.867	185.622
TOTAL SR VIA WR				92.902	89.886
TOTAL SOUTHERN REGION (EXPORT)				284.769	275.508

From Utility	To Beneficiary	Trader	Link	Energy in MU	
				At Seller Periphery	At Buyer Periphery

IMPORT

				At Interegional Periphery	At Buyer Periphery
MPSEB	AP	TATA	WR	5.519	3.498
MPSEB	AP	AEL	WR	6.431	6.235
Total AP via WR				11.950	9.733
Total(AP)				11.950	9.733
TOTAL SR VIA ER				0.000	0.000
TOTAL SR VIA WR				11.950	9.733
TOTAL SOUTHERN REGION(IMPORT)				11.950	9.733

INTER REGIONAL EXPORT USING CHIKKODI KOLHAPUR LINE

				At Seller Periphery	At Buyer Periphery
KAR(Jindal)	MSEDCL	PTC	Chikkodi-Kolhapur	0.000	0.000

B.पू.क्षे.के.एनटीपीसी केंद्रों से अनुसूचित अंतर क्षेत्रीय विनिमय

SCHEDULED INTER REGIONAL EXCHANGES IN MU FROM NTPC STATIONS IN ER

BENEFICIERY	ENERGY SCHEDULED FROM NTPC STATIONS IN ER			
	FSTPP	KHSTPP	TSTPP	TOTAL
Tamil Nadu	39.694	17.875	24.157	81.726

Goa's share in RSTPS scheduled at Chandrapur South bus for wheeling to Goa is 0.0 MU

Wheeled Energy via SR (Schedule Energy)

From Beneficiary	To Beneficiary	TRADER	Energy in MU	
			At ER Periphery	At WR Periphery
NIL				
TOTAL			0.000	0.000

(As furnished by PGCIL)

Sl.	ElementName	VoltLevel	AttSystem	AttPG	AttDeemed	% Availability for July 07	% Cum. Avbty till July 07
BUS REACTORS							
1	CUDDAPAH BUS REACTOR	400 kV	0.00	0.00	50.42	100.00	100.00
2	GOOTY BUS REACTOR	400 kV	0.00	0.00	4.23	100.00	99.99
3	KHAMMAM BUS REACTOR	400 kV	0.00	0.00	0.00	100.00	100.00
4	NAGARJUNASAGAR BUS REACTOR	400 kV	0.00	0.00	0.00	100.00	100.00
5	NELLORE BUS REACTOR	400 kV	0.00	0.00	99.47	100.00	100.00
6	VIJAYAWADA BUS REACTOR	400 kV	0.00	0.00	0.00	100.00	100.00
7	VISAKHAPATNAM BUS REACTOR	400 kV	0.00	0.00	0.00	100.00	100.00
8	BANGALORE BUS REACTOR	400 kV	0.00	0.00	410.17	100.00	100.00
% Availability of BR						100.00	100.00
ICTs							
1	CUDDAPAH ICT	400 kV/220 kV	0.00	11.65	0.00	98.43	99.60
2	GAJUWAKA ICT	400 kV/220 kV	0.00	0.00	0.00	100.00	100.00
3	GOOTY ICT	400 kV/220 kV	0.00	12.15	1.30	98.37	99.56
4	HYDERABAD ICT - I	400 kV/220 kV	0.00	2.57	0.00	99.66	99.79
5	HYDERABAD ICT - II	400 kV/220 kV	0.00	47.40	0.00	93.63	94.14
6	HYDERABAD ICT - III	400 kV/220 kV	0.00	0.00	0.00	100.00	100.00
7	KHAMMAM ICT	400 kV/220 kV	0.00	0.00	214.37	100.00	93.77
8	MUNIRABAD ICT	400 kV/220 kV	0.00	0.00	0.00	100.00	100.00
9	NAGARJUNASAGAR ICT - I	400 kV/220 kV	0.00	0.00	0.00	100.00	100.00
10	NAGARJUNASAGAR ICT - II	400 kV/220 kV	0.00	0.00	0.00	100.00	99.25
11	NAGARJUNASAGAR ICT - III	400 kV/220 kV	0.00	0.00	0.00	100.00	100.00
12	VIJAYAWADA ICT	400 kV/220 kV	0.00	0.00	0.00	100.00	100.00
13	BANGALORE ICT - I	400 kV/220 kV	0.00	0.00	0.00	100.00	99.73
14	BANGALORE ICT - II	400 kV/220 kV	0.00	0.00	0.00	100.00	100.00
15	HIRIYUR ICT	400 kV/220 kV	0.00	0.00	0.00	100.00	100.00
16	HOSUR ICT - I	400 kV/220 kV	0.00	5.65	0.00	99.24	99.81
17	HOSUR ICT - II	400 kV/220 kV	0.00	5.18	0.00	99.30	99.82
18	KOLAR ICT	400 kV/220 kV	0.00	0.80	0.17	99.89	99.97
19	MADURAI ICT - I	400 kV/220 kV	0.00	0.00	0.00	100.00	100.00
20	MADURAI ICT - II	400 kV/220 kV	0.00	0.00	0.00	100.00	100.00
21	MYSORE ICT I	400 kV/220 kV	0.00	0.00	0.00	100.00	99.68
22	MYSORE ICT II	400 kV/220 kV	0.00	0.00	0.00	100.00	99.72
23	NARENDRA ICT I	400 kV/220 kV	0.00	0.00	0.00	100.00	100.00
24	NARENDRA ICT II	400 kV/220 kV	0.00	1.63	0.00	99.78	99.69
25	TRICHY ICT - I	400 kV/220 kV	0.00	0.00	0.00	100.00	99.98
26	TRICHY ICT - II	400 kV/220 kV	0.00	8.95	0.00	98.80	99.69
27	TRIVANDRUM - ICT I	400 kV/220 kV	0.00	0.00	0.00	100.00	100.00
28	TRIVANDRUM - ICT II	400 kV/220 kV	0.00	0.00	0.00	100.00	100.00
29	UDUMALPET ICT - I	400 kV/220 kV	0.00	0.00	0.00	100.00	99.55
30	UDUMALPET ICT - II	400 kV/220 kV	0.00	0.00	0.00	100.00	99.55
% Availability of ICTs						99.59	99.47
TRANSMISSION LINES							
1	ALMATHY - CHENNAI I	400kV	0.00	0.00	0.00	100.00	99.50
2	ALMATHY - CHENNAI II	400kV	0.00	0.00	0.00	100.00	99.57
3	GOOTY - NEELAMANGALA	400kV	0.00	0.00	0.00	100.00	99.46
4	GOOTY - RAICHUR I	400kV	0.28	0.00	61.83	100.00	98.36
5	GOOTY - RAICHUR II	400kV	0.00	0.00	83.53	100.00	98.82
6	HYDERABAD - NAGARJUNASAGAR	400kV	0.00	0.00	0.00	100.00	99.64
7	HYDERABAD-KURNOOL	400kV	0.00	4.17	0.00	99.44	99.82

AVAILABILITY OF SR TRANSMISSION ELEMENTS CATEGORY WISE

ANNEXURE - V
(Page 2 of 3)

Sl.	ElementName	VoltLevel	AttSystem	AttPG	AttDeemed	% Availability for July 07	% Cum. Avbty till July 07
8	KHAMMAM - NAGARJUNA SAGAR	400kV	0.00	0.87	0.00	99.88	99.94
9	KHAMMAM - VIJAYAWADA	400kV	0.00	0.00	0.00	100.00	100.00
10	KURNOOL-GOOTY	400kV	0.00	0.00	0.00	100.00	99.57
11	MEHBOOBNAGAR-RAICHUR	400kV	0.00	0.00	0.00	100.00	100.00
12	NAGARJUNASAGAR - CUDDAPAH - I	400kV	0.00	0.00	0.00	100.00	100.00
13	NAGARJUNASAGAR - CUDDAPAH - II	400kV	0.00	0.00	44.07	100.00	100.00
14	NAGARJUNASAGAR - GOOTY	400kV	0.23	12.50	4.60	98.32	99.56
15	NAGARJUNASAGAR-MEHBOOBNAGAR	400kV	0.13	0.00	14.15	100.00	100.00
16	NELLORE - ALMATHY II	400kV	0.00	0.00	6.27	100.00	99.03
17	NELLORE-ALMATHY I	400kV	0.00	0.00	0.00	100.00	98.95
18	RAICHUR - MUNIRABAD	400kV	0.00	0.00	19.37	100.00	99.99
19	RAMAGUNDAM - HYDERABAD - I	400kV	0.00	0.00	0.00	100.00	99.80
20	RAMAGUNDAM - HYDERABAD - II	400kV	0.00	0.00	192.60	100.00	100.00
21	RAMAGUNDAM - HYDERABAD - III	400kV	0.00	0.00	143.60	100.00	99.38
22	RAMAGUNDAM - HYDERABAD - IV	400kV	0.00	0.00	8.52	100.00	100.00
23	RAMAGUNDAM - KHAMMAM	400kV	0.00	0.00	0.00	100.00	100.00
24	RAMAGUNDAM - NAGARJUNASAGAR - I	400kV	0.00	1.28	0.00	99.83	99.93
25	RAMAGUNDAM - NAGARJUNASAGAR - II	400kV	0.00	0.00	0.00	100.00	100.00
26	VIJAYAWADA - GAJUWAKA I	400kV	0.00	0.00	397.50	100.00	100.00
27	VIJAYAWADA - GAJUWAKA II	400kV	0.00	0.00	618.55	100.00	100.00
28	VIJAYAWADA - GAJUWAKA III	400kV	0.00	0.00	0.00	100.00	100.00
29	VIJAYAWADA - NELLORE I	400kV	0.00	11.52	26.92	98.45	99.58
30	VIJAYAWADA - NELLORE II	400kV	0.00	0.00	25.93	100.00	99.14
31	BANGALORE - SALEM	400kV	0.00	0.00	0.00	100.00	99.91
32	CHITTOOR - CHENNAI	400kV	0.00	0.00	0.00	100.00	99.98
33	CUDDAPAH - CHITTOOR	400kV	0.17	0.00	0.40	100.00	99.99
34	CUDDAPAH - KOLAR	400kV	0.00	0.00	0.00	100.00	99.99
35	GOOTY - HOODY	400kV	0.00	0.00	8.53	100.00	99.67
36	HOSUR-SALEM	400kV	0.00	0.00	0.00	100.00	99.81
37	KAIGA - NARENDRA I	400kV	0.03	0.00	292.27	100.00	100.00
38	KAIGA - NARENDRA II	400kV	0.00	0.00	30.48	100.00	100.00
39	KAIGA - SIRSI - I	400kV	0.00	0.00	260.58	100.00	100.00
40	KAIGA - SIRSI - II	400kV	0.00	0.00	120.65	100.00	100.00
41	KOLAR - BANGALORE	400kV	0.00	0.00	27.62	100.00	100.00
42	KOLAR - CHENNAI	400kV	0.00	0.00	0.00	100.00	99.81
43	KOLAR - HOODY - I	400kV	0.00	0.00	0.00	100.00	100.00
44	KOLAR - HOODY - II	400kV	0.00	0.00	0.00	100.00	100.00
45	KOLAR - HOSUR - I	400kV	0.00	2.67	0.00	99.64	99.58
46	KOLAR - HOSUR - II	400kV	0.00	0.00	0.00	100.00	99.76
47	MADURAI-TRIVANDRUM - I	400kV	0.00	0.00	128.18	100.00	100.00
48	MADURAI-TRIVANDRUM - II	400kV	0.00	0.00	70.13	100.00	99.99
49	NELAMANGALA - MYSORE I	400kV	0.00	0.00	122.92	100.00	99.79
50	NELAMANGALA - MYSORE II	400kV	0.00	0.00	4.87	100.00	99.79
51	NELAMANGALA - SOMANAHALLI	400kV	0.00	0.00	0.00	100.00	100.00
52	NELAMANGALA - SOMANAHALLI - I	400kV	0.00	4.88	0.00	99.34	99.50
53	NELAMANGALA - SOMANAHALLI - II	400kV	0.00	0.00	0.00	100.00	100.00
54	NEYVELI - BAHOR	230kV	0.00	0.00	0.00	100.00	100.00
55	NEYVELI - MADRAS	400kV	0.00	0.00	0.00	100.00	100.00
56	NEYVELI - VILLIANUR	230kV	0.00	0.00	0.00	100.00	100.00
57	NEYVELI TS II - TRICHY - I	400kV	0.00	0.00	2.72	100.00	100.00
58	NEYVELI TS-I EXTENSION - TRICHY	400kV	0.00	0.00	0.00	100.00	100.00

Sl.	ElementName	VoltLevel	AttSystem	AttPG	AttDeemed	% Availability for July 07	% Cum. Avbty till July 07
59	NEYVELI TS-II - NEYVELI TS-I EXPANSION	400kV	0.00	0.00	0.00	100.00	100.00
60	NEYVELI-SALEM - I	400kV	0.00	0.00	0.00	100.00	100.00
61	NEYVELI-SALEM - II	400kV	0.00	0.00	0.00	100.00	100.00
62	SALEM - UDUMALPET I	400kV	0.00	0.00	0.00	100.00	100.00
63	SALEM - UDUMALPET II	400kV	0.00	0.00	0.00	100.00	100.00
64	TRICHY - MADURAI - I	400kV	0.00	0.00	0.00	100.00	99.96
65	TRICHY - MADURAI - II	400kV	0.00	0.00	0.95	100.00	100.00
66	UDUMALPET - MADURAI	400kV	0.00	0.00	0.00	100.00	99.75
67	UDUMALPET - TRICHUR - I	400kV	0.00	0.00	0.00	100.00	100.00
68	UDUMALPET - TRICHUR - II	400kV	0.00	0.00	0.00	100.00	100.00
% Availability of Tr_Lines						99.88	99.78
% Availability of SR AC Tr_System (Intra Regional)						99.81	99.71

KAYAMKULAM SYSTEM							
1	KAYAMKULAM - EDAMON - I	220 kV	0.00	0.00	0.32	100.00	100.00
2	KAYAMKULAM - KUNDRA	220 kV	0.00	0.00	0.00	100.00	100.00
3	KAYAMKULAM - POLLAM - I	220 kV	0.00	0.92	0.00	99.88	99.97
4	KAYAMKULAM - POLLAM - II	220 kV	0.00	21.17	9.78	97.16	99.28
5	KUNDRA - EDAMON	220 kV	0.00	0.00	4.45	100.00	100.00
% Availability of KYM System						99.55	99.89

INTER REGIONAL AC SYSTEM (SR-WR)							
1	RAMAGUNDAM - CHANDRAPUR - I	400 kV	0.00	45.23	0.00	93.92	97.06
2	RAMAGUNDAM - CHANDRAPUR - II	400 kV	0.00	0.95	0.00	99.87	98.76
% Availability of Inter Regional AC (SR-WR)						96.90	97.91

INTER REGIONAL AC SYSTEM (SR-ER)							
1	JEYPORE - GAJUWAKA - I	400 kV	0.00	0.00	0.00	100.00	99.88
2	JEYPORE - GAJUWAKA - II	400 kV	0.00	0.00	0.00	100.00	99.71
% Availability of Inter Regional AC (SR-ER)						100.00	99.71

INTER REGIONAL HVDC SYSTEM (SR-ER)							
1	VISAKHAPATNAM HVDC BACK TO BACK BLOCK - I	500 kV	0.00	0.00	0.00	100.00	100.00
2	VISAKHAPATNAM HVDC BACK TO BACK BLOCK - II	500 kV	0.00	0.00	0.00	100.00	94.25
% Availability of Inter Regional DC (SR-ER)						100.00	99.13

INTRA REGIONAL HVDC SYSTEM							
1	TALCHER - KOLAR HVDC POLE - I	500 kV	0.00	5.27	127.37	99.29	98.32
2	TALCHER - KOLAR HVDC POLE - II	500 kV	0.00	0.00	176.37	100.00	99.54
% Availability of SR_Intra DC System						99.65	94.58

INTER REGIONAL HVDC SYSTEM (SR-WR) - till May 2007								
1	BHADRAVATI HVDC BACK TO BACK BLOCK - I	500 kV	0.00	0.00	0.00	100.00	100.00	
2	BHADRAVATI HVDC BACK TO BACK BLOCK - II	500 kV	0.00	0.00	0.00	100.00	99.99	
Availability figures as certified by WRLDC, Mumbai						% Availability of Inter Regional DC (SR-WR) - up to May 07	100.00	99.99

Note:

- 400 kV Gooty - Raichur I & II lines are in commercial operation with effect from 01.05.2007
- 80 MVAR Bus Reactor at Nellore S/S is under commercial operation with effect from 01.07.2007

LINE FLOWS IN Mus AND POWER FLOW IN MW:

Jul-07

NAME OF THE LINE	END	Import (In MUs)	Maximum Power Flow (In MW)	Export (In MUs)	Maximum Power Flow (In MW)
400KV Gooty - Nelamangla	Gooty	---	---	206.96	498
400KV Madurai-Trivendrum I & II	Madurai	0.09	24	56.02	259
400KV Nellore-Alamathy I & II	Nellore	---	---	324.53	852
400KV Chittoor-Chennai	Chittoor	0.01	12	140.53	403
400KV Gooty - Hoody	Gooty	---	---	172.07	440
400KV Gooty - Raichur I & II	Gooty	181.25	495	1.16	77
400KV Somanahalli-Salem	Somanahalli	14.94	193	26.36	230
400KV Trichur-Udumalpet I & II	Trichur ICT	207.99	559	---	---
400KV Raichur-Mahaboob Nagar	Raichur	15.79	219	31.19	265
400KV Kolar-Cuddapah	Kolar	133.73	510	---	---
400KV Kolar-Somanahalli	Kolar	---	---	73.39	326
400KV Kolar-Chennai	Kolar	0.70	47	95.39	385
400KV Kolar-Hoody I & II	Kolar	3.90	174	180.75	671
400KV Kolar-Hosur I & II	Kolar	0.39	126	203.19	605
220KV Tandur-Sedam	Tandur	50.19	107	---	---
220KV Gooty-Alipur	Gooty	4.07	65	11.27	72
220KV Chittoor-Tiruvalam	Chittoor	0.05	---	9.29	188
220KV Sulurpet-Gummidipoondi	Sulurpet	0.02	10	16.25	111
220KV Theni-Moozhiyar	Theni	3.85	64	13.39	136
220KV Kudikurchi-Edamon	Kudikurchi	---	---	117.60	222
220KV Udumalpet-Idukki	Udumalpet	0.91	68	41.40	160
220KV Hosur-Yerrandanahalli	Hosur	0.80	62	35.85	163
110KV Kuzhithurai-Parassala	Kuzhithurai	---	---	2.83	11
220KV Kadakola-Kaniampetta	Kadakola	---	---	8.85	47
110KV Manjeswara-Mangalore	Manjeswara	4.97	11	---	---
400KV Chandrapur-Ramagundam I & II	Chandrapur	91.82	769	39.58	666
HVDC Gazuwaka (Pole I & II)	Gazuwaka	322.76	969	0.75	707
HVDC Talcher-Kolar (Pole I & II)	Talcher	0.33	500	635.19	2543
220KV Upper Sileru-Balimela	Upper Sileru	---	---	---	---
220KV Lower Sileru-Barsur	Lower Sileru	---	---	---	---
220KV Kolhapur-Chikkodi	Chikkodi	---	---	---	---

**PERCENTAGE OF ALLOCATED CAPACITY SHARE (INCLUDING UNALLOCATED PORTION
BASED ON GOI ORDERS) OF BENEFICIARIES IN I.S.G.S (SR) FOR THE MONTH OF JULY 2007**

FOR THE PERIOD FROM 01.07.07 TO 31.07.07								
STATION / BENEFICIARY	TIME SLOT	AP	KARNATAKA	KSEB	TNEB	PUDU CHERRY	PG-HVDC	GOA
NTPC - RSTPS STAGE-I & II	0000 Hrs to 0200 Hrs, 0600 Hrs to 1800 Hrs & 2200 Hrs to 2400	35.00	19.99	11.67	25.15	3.32	0.11	4.76
	0200 Hrs to 0600 Hrs	35.99	19.00	11.67	25.15	3.32	0.11	4.76
	1800 Hrs to 2200 Hrs	34.08	20.20	12.40	25.13	3.32	0.11	4.76
NTPC - RSTPS STAGE-III	0000 Hrs to 0200 Hrs, 0600 Hrs to 1800 Hrs & 2200 Hrs to 2400	36.76	21.04	12.20	26.44	3.56		
	0200 Hrs to 0600 Hrs	37.77	20.03	12.20	26.44	3.56		
	1800 Hrs to 2200 Hrs	35.82	21.26	12.95	26.42	3.55		
STATION / BENEFICIARY	TIME SLOT	AP	KARNATAKA	KSEB	TNEB	PUDU CHERRY	PG-HVDC	ORISSA
NTPC - TALCHER STAGE-II	0000 Hrs to 0200 Hrs, 0600 Hrs to 1800 Hrs & 2200 Hrs to 2400	21.49	18.80	21.35	24.86	3.30	0.20	10.00
	0200 Hrs to 0600 Hrs	21.85	18.44	21.35	24.86	3.30	0.20	10.00
	1800 Hrs to 2200 Hrs	21.28	18.95	21.35	24.91	3.31	0.20	10.00
STATION / BENEFICIARY	TIME SLOT	AP	KARNATAKA	KSEB	TNEB	PUDU CHERRY	NLC MINES	
NLC TPS II - STAGE-I	0000 Hrs to 0200 Hrs, 0600 Hrs to 1800 Hrs & 2200 Hrs to 2400	20.12	21.08	10.00	29.70	11.16	7.94	
	0200 Hrs to 0600 Hrs	20.75	20.45	10.00	29.70	11.16	7.94	
	1800 Hrs to 2200 Hrs	19.54	21.22	10.46	29.69	11.15	7.94	
NLC TPS II - STAGE-II	0000 Hrs to 0200 Hrs, 0600 Hrs to 1800 Hrs & 2200 Hrs to 2400	26.09	21.34	10.71	33.29	2.62	5.95	
	0200 Hrs to 0600 Hrs	26.71	20.71	10.72	33.29	2.62	5.95	
	1800 Hrs to 2200 Hrs	25.52	21.47	11.17	33.28	2.61	5.95	
NLC TPS I - EXPN.	0000 Hrs to 0200 Hrs, 0600 Hrs to 1800 Hrs & 2200 Hrs to 2400	0.00	25.72	16.36	53.77	4.15		
	0200 Hrs to 0600 Hrs	0.00	25.72	16.36	53.77	4.15		
	1800 Hrs to 2200 Hrs	0.00	25.72	16.36	53.77	4.15		
NPC - MAPS	0000 Hrs to 0200 Hrs, 0600 Hrs to 1800 Hrs & 2200 Hrs to 2400	10.70	7.58	5.23	75.09	1.40		
	0200 Hrs to 0600 Hrs	10.97	7.31	5.23	75.09	1.40		
	1800 Hrs to 2200 Hrs	10.44	7.64	5.43	75.09	1.40		
NPC - KGS	0000 Hrs to 0200 Hrs, 0600 Hrs to 1800 Hrs & 2200 Hrs to 2400	33.70	28.19	8.64	26.70	2.77		
	0200 Hrs to 0600 Hrs	34.71	27.18	8.64	26.70	2.77		
	1800 Hrs to 2200 Hrs	32.75	28.41	9.39	26.68	2.77		
NPC - KGS Unit-3	0000 Hrs to 2400 Hrs	32.89	31.82	9.36	24.33	1.60		

Percentage Allocation for Scheduling From 01.07.07 To 31.07.07.

STATION / BENEFICIARY	TIME SLOT	AP	KARNATAKA	KSEB	TNEB	PUDU CHERRY
NLC TPS II - STAGE-I	0000 Hrs to 0200 Hrs, 0600 Hrs to 1800 Hrs & 2200 Hrs to 2400	21.86	22.90	10.86	32.26	12.12
	0200 Hrs to 0600 Hrs	22.54	22.22	10.86	32.26	12.12
	1800 Hrs to 2200 Hrs	21.23	23.05	11.36	32.25	12.11
NLC TPS II - STAGE-II	0000 Hrs to 0200 Hrs, 0600 Hrs to 1800 Hrs & 2200 Hrs to 2400	27.74	22.69	11.39	35.39	2.79
	0200 Hrs to 0600 Hrs	28.40	22.02	11.40	35.39	2.79
	1800 Hrs to 2200 Hrs	27.13	22.83	11.88	35.38	2.78